

GE Healthcare

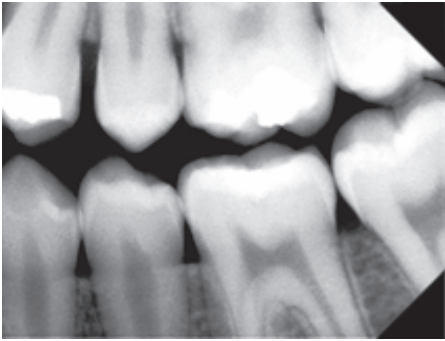
Intelligence in intraoral imaging


FOCUS™ intraoral x-ray



imagination at work

Uncompromised quality





FOCUS™ is a reliable high frequency intraoral DC that continues the legacy of GE's world famous panoramic x-ray system, the Orthopantomograph®. High quality system components, a user-friendly design and advanced system controls, combined with GE's manufacturing excellence, make FOCUS x-ray extremely dependable and ready to provide years of reliable service.

compact design
three arm lengths
stable arm
dose display
dual control panel
clear view of the patient

Easy, smart c

Easy to handle

FOCUS x-ray's design is based on demanding clinical needs. The arm can be moved smoothly, yet it maintains exceptional stability, keeping the tube head motionless during exposure. The offset tube head allows the user to have a direct view of the patient, enabling fast and easy positioning.

Built-in dose display

The built-in Dose Area Product function is an intelligent tool which monitors patient dose for individual patient safety and longer-term recording. The dose is calculated and shown after every exposure on the FOCUS control panel.



Smart control

Exposure selection with FOCUS x-ray is quick and effortless.

and efficient

Smart control

The user-friendly remote control includes pre-programmed exposure settings for all adult and pediatric dentition. You can also choose your own exposure settings manually or save your preferred exposures into the memory. FOCUS x-ray provides the choice of 60 or 70kV, pediatric or adult exposures, film or digital modes and exposure time selections between 0.02 and 3.2 seconds.

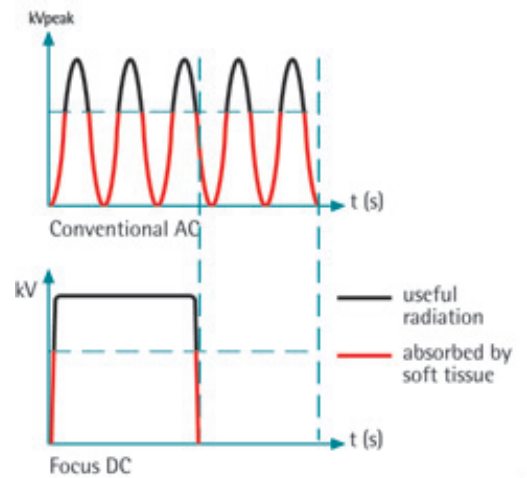
Efficient workflow

The possibility of a dual control panel configuration offers flexibility and smooth operation from two different rooms. FOCUS x-ray incorporates a reliable heat integrator that protects the tube head. It provides years of dependable service and allows a rapid exposure sequence to be made without the need for cooling delays. A wide selection of beam limiting cones provides choice in the control of desired x-ray field coverage.



Compact design with three arm lengths

FOCUS x-ray is available with three choices of arm length: 69" (176 cm), 75" (191 cm) and 85" (216 cm). The innovative integration of electronics inside the horizontal arm makes FOCUS x-ray easy and fast to install and service.



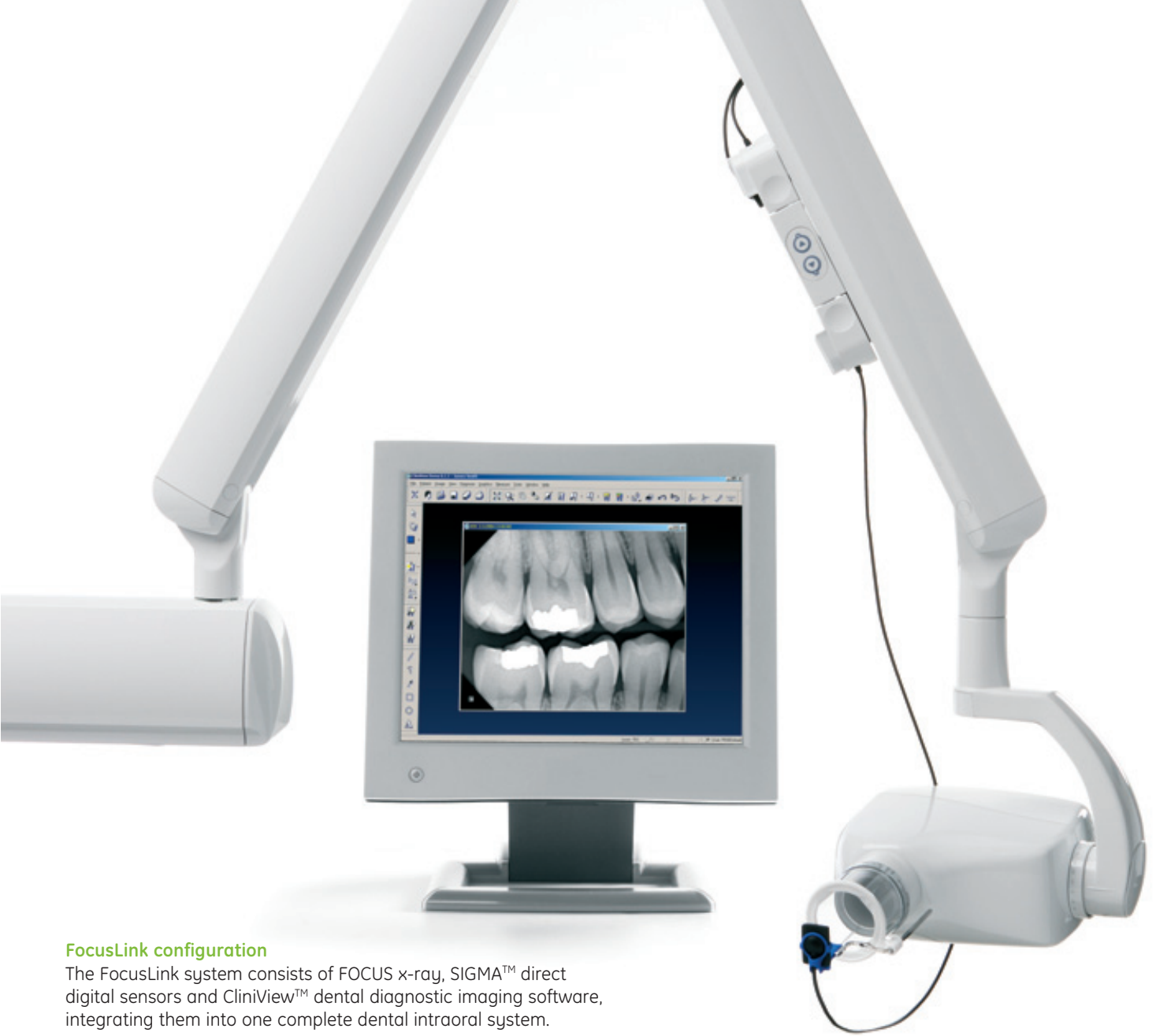
Powerful generator

The FOCUS x-ray's 200 kHz DC generator provides efficient radiation.



Selection of cones

A comprehensive range of FOCUS cones is available.



FocusLink configuration

The FocusLink system consists of FOCUS x-ray, SIGMA™ direct digital sensors and CliniView™ dental diagnostic imaging software, integrating them into one complete dental intraoral system.

FocusLink™ makes the difference

The FocusLink system brings a new level of precision and intelligence to intraoral x-ray imaging with an advanced Automatic Exposure Control (AEC) feature. FocusLink ensures that you produce optimally exposed images.



The AEC function.



The SIGMA SmartBox™.

Automatic exposure control (AEC) for optimizing image quality

For the first time, this user- and patient- friendly AEC feature is available for intraoral imaging. You only need to push the exposure button and the AEC system computes and sets the optimized exposure time. Exposure times are automatically minimized and unnecessary dose is avoided. Exposure parameters (kV, mA and exposure time) are automatically recorded with each digital image through CliniView software.

Smart physical integration

With SIGMA SmartBox™, a choice of one or two SIGMA sensors can be neatly attached to the FOCUS arm. Sensors are always conveniently within reach, with no cables on the floor in danger of damage. Switch-over between two sizes of sensors can be done without removing the connectors. A sensor can also be easily disconnected and transported to another room if desired.



The compact design, the remote control possibility and the three different arm lengths of the FOCUS x-ray, permit flexibility and mounting in almost any location.



The ideal intraoral
x-ray for every dental
practice



FOCUS intraoral x-ray

Technical specifications and dimensions

Generator

Constant potential (high voltage DC, 100-200 kHz)

Tube voltage

60 or 70 kV

Tube current

7 mA

Focal spot

0.7 mm to IEC 60336

Filtration

2 mm Al

Line voltage

115 / 230 VAC +/- 10 %, 50/60 Hz

Fuse rating

5 A / 230 VAC

8 A / 115 VAC

Power consumption

1240 VA/230 VAC

1040 VA/115 VAC

Exposure time range

0.02 – 3.2 seconds

Expandability

AEC (Automatic Exposure Control) via FocusLink with SIGMA sensor system

Remote exposure button

Two remote controls

Door switch readiness

External exposure

Lamp readiness

Beam limiting cone dimensions

Round \varnothing 2.36" (60 mm), rectangular 1.38" x 1.77" (35 x 45 mm)

SSD (Source-Skin Distance)

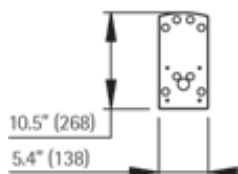
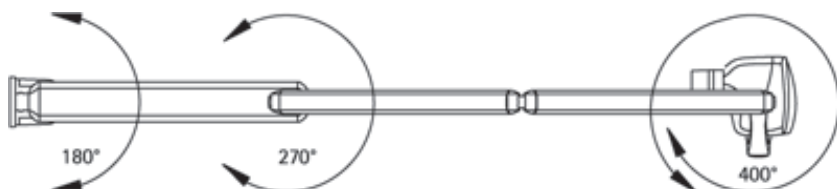
Standard cone 9" (229 mm), long cone 12" (305 mm)

Installation

Vertical wall mount for single stud, or horizontal wall mount for 16" (406 mm) center stud installation

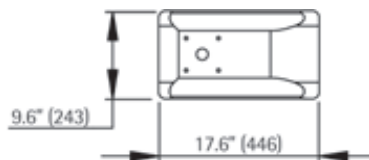
Weight

Total 66 lbs (30 kg)



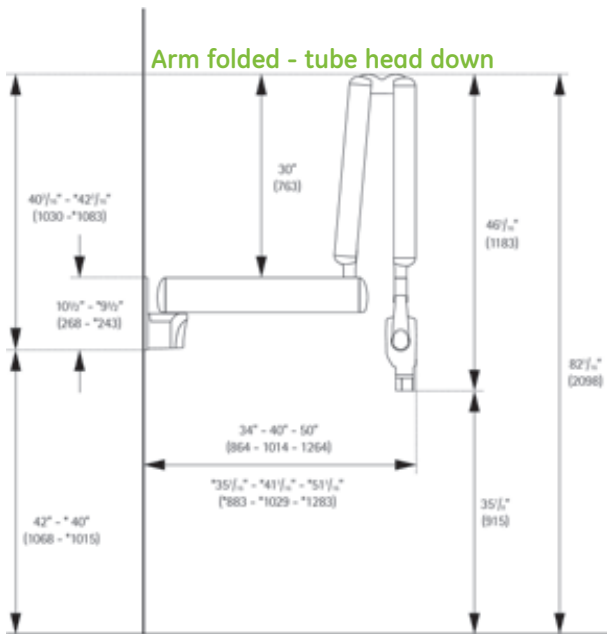
Single stud

Standard wall mount for single stud.

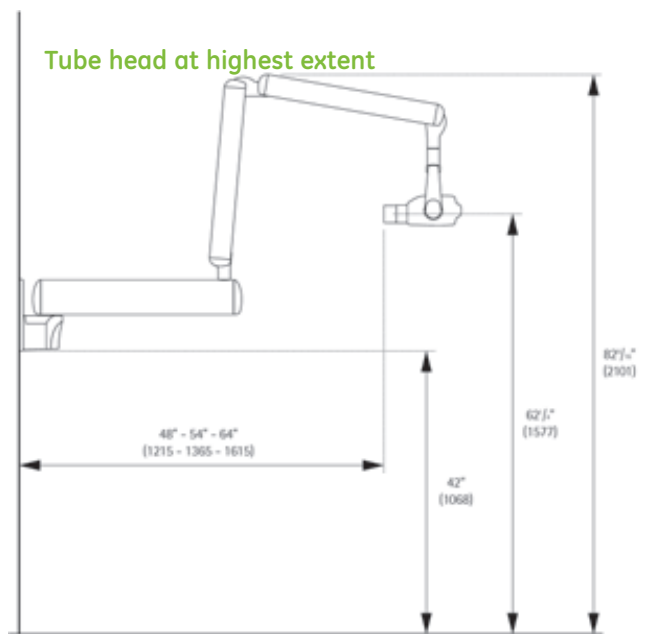


16" center stud

Standard wall mount for 16" center studs.

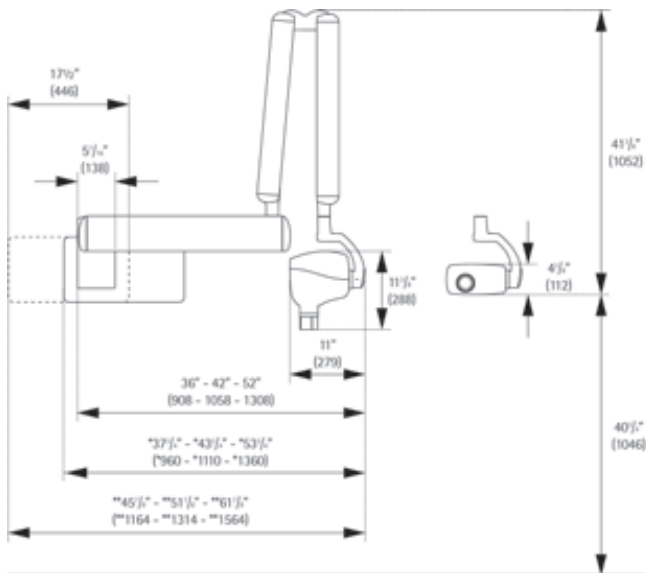


* Denotes dimensions based on two stud mount.



Bottom edge of two stud mount should be 40" (1020 mm) above floor.

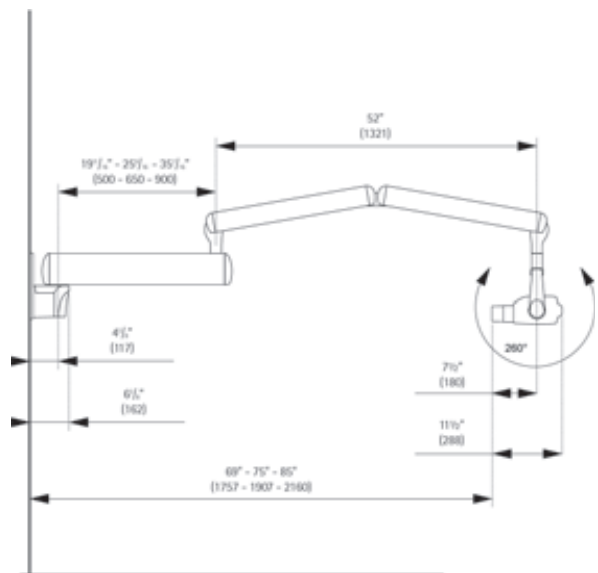
Unit parked against wall



* Denotes dimensions based on two stud mount oriented to the right.

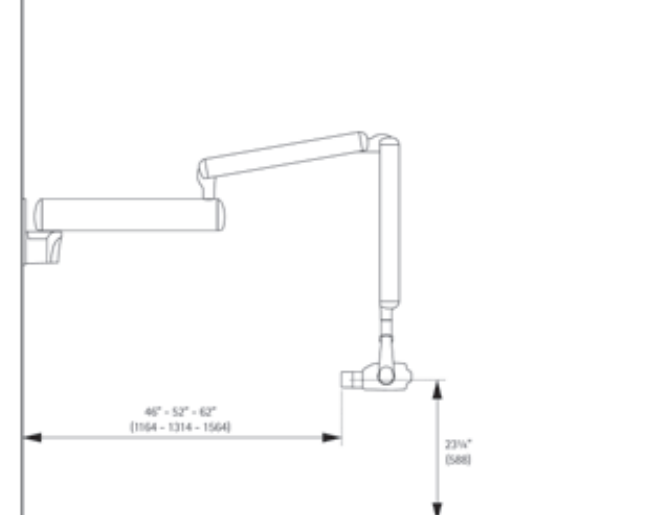
** Denotes dimensions based on two stud mount oriented to the left.

Tube head at farthest extent



Two stud mount extends out an additional 1 3/16" (30 mm).

Tube head at lowest position



Two stud mount extends out an additional 1 3/16" (30 mm).

Note: All dimensions are based on single stud mount and short cone.

© 2005 General Electric Company

GE Healthcare Finland Oy, a General Electric company, going to market as GE Healthcare.

General Electric Company reserves the right to make changes in specifications and features shown herein, or discontinue the product described at any time without notice or obligation. Contact your GE Representative for the most current information.

Orthopantomograph® and Orthoceph® are registered trademarks of General Electric Company. U.S. patents 5,016,264; 5,425,065; 5,444,754; 6,731,717 and 6,829,326. German patent 4,344,745. FI patents 114383 and 112594. FOCUS and SIGMA comply with UL and C-UL (File E218408). CE marked according to Medical Device Directive (MDD) 93/42/EEC. Electrical safety according to IEC 60601-1. Manufacturing complies with ISO 9001 and ISO 14001.

70585-5 03/05 Printed in Finland

Dental Americas
Instrumentarium
Imaging Inc.
300 West Edgerton
Avenue, Milwaukee,
Wisconsin, 53207 U.S.A.
T +1 414 747 1030,
800 558 6120
F +1 414 481 8665

Dental Germany
Instrumentarium Dental
GmbH
Siemensstrasse 12,
D-77694 Kehl, Germany
T +49 7851 932 90
F +49 7851 932 930

Dental France
Instrumentarium
Imaging France S.A.R.L.
8, Rue paul Dautier
78140 VELIZY
VILLACOUBLAY, France
T +33 1 39 26 85 50
F +33 1 39 26 85 79

Dental Italy
Instrumentarium
Imaging Italia S.R.L.
Via Cassanese 100,
20090 Segrate (Mi), Italy
T +39 02 213 0281
F +39 02 2130 2860

Build your total dental imaging system with GE Healthcare

GE Healthcare offers advanced and comprehensive tools for dental and maxillofacial x-ray imaging. Our research and development work combined with vast experience and know-how creates a strong foundation for supplying advanced imaging products, like the legendary Orthopantomograph®.

As a technology leader, GE utilizes the latest innovations in image acquisition and information technology into its comprehensive intraoral and extraoral x-ray products. The transition to digital has given us an opportunity to widen our product range. Today, we cover a large field of dental imaging needs with our digital intraoral sensors, film and digital panoramic and cephalometric imaging units, intraoral x-ray unit, and dental diagnostic imaging software.

GE Healthcare

Dental World Headquarters:
P.O.Box 20, FI-04301 Tuusula, Finland
T +358 10 394 6500
F +358 10 394 6501

www.gehealthcare.com



Intraoral imaging



Extraoral panoramic imaging



Extraoral cephalometric imaging

