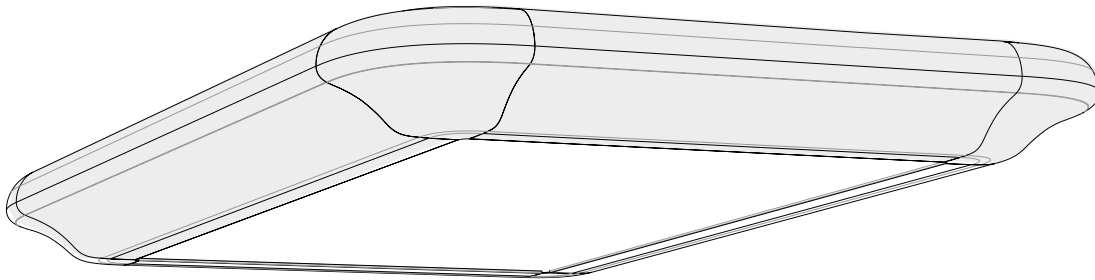
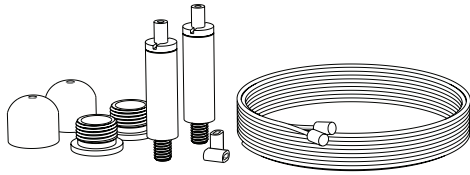


Denta/Dentaplus
Owner's Manual



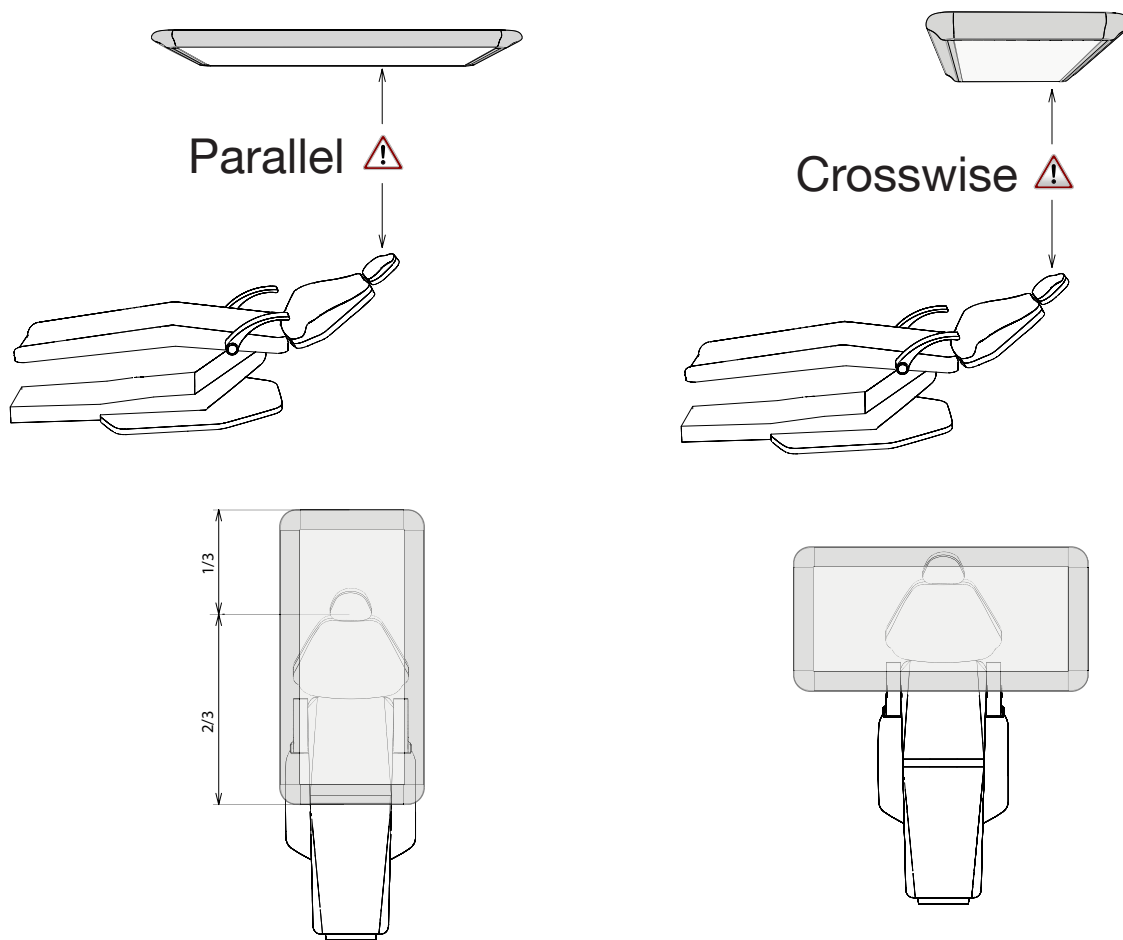
Note: Do not use sharp objects when unpacking the luminaire!

1. Unpacking your Denta/Dentaplus

Open the packaging carefully without using any sharp objects!

The packaging includes:

- Wire arrangements for attaching the luminaire to the ceiling (4 pieces)
- The Denta/Dentaplus luminaire

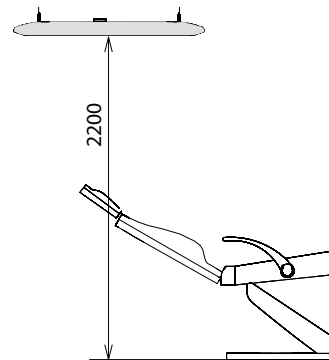


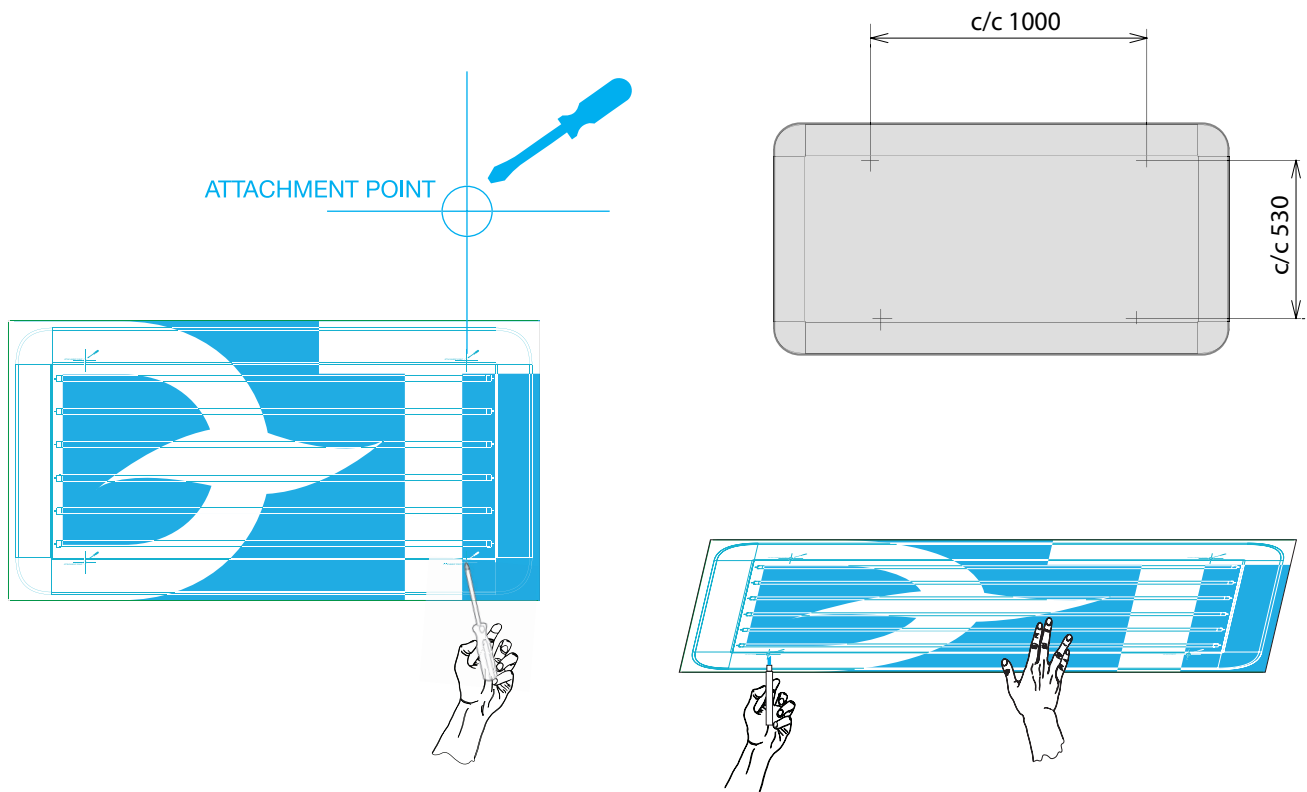
2. Positioning your Denta/Dentaplus

The luminaire should be positioned in one of the following two positions:

- Parallel position - the eyes of the patient should be in line with 1/3rd of the luminaire.
- Crosswise position - the eyes of the patient should be in line with the top of the light source.

Note: The recommended height of the luminaire is to be placed 2,2 meters above floor level

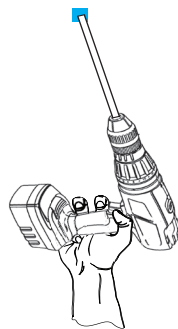


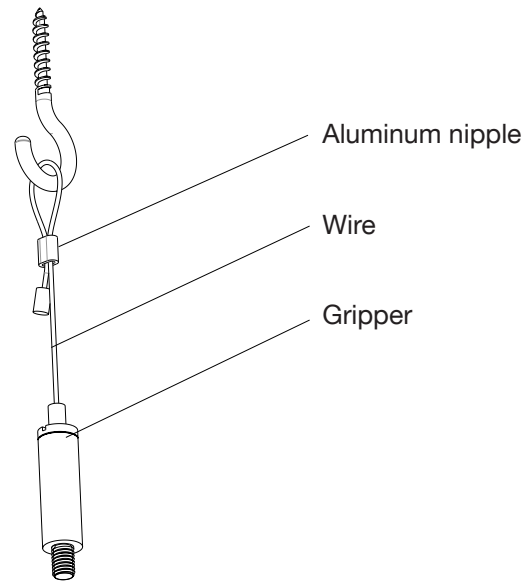
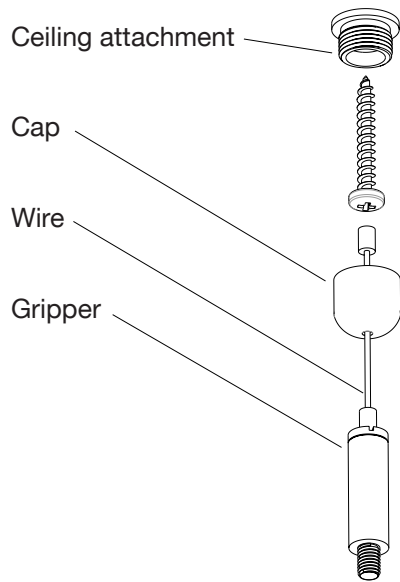


3. Preparing the mounting of your Denta/Dentaplus

After unpacking the luminaire use the packaging as a guide for marking the attachment points in the ceiling.

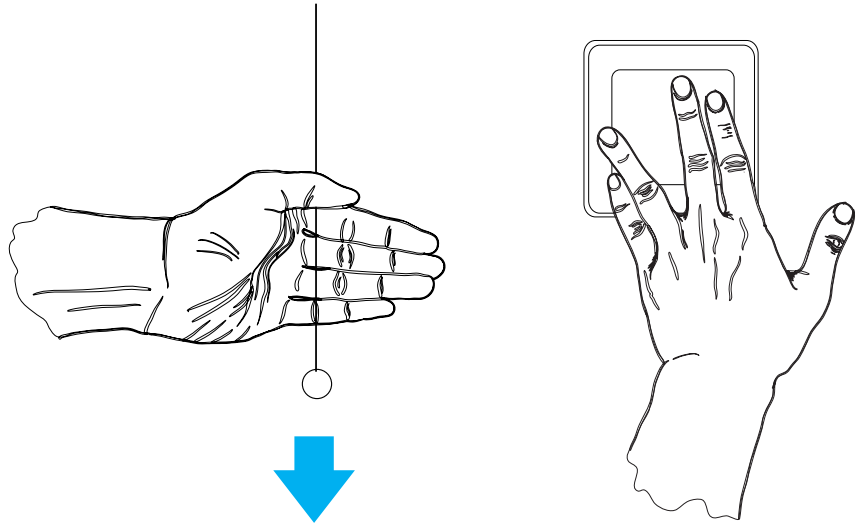
- On the outside of the cardboard, there are four attachment points marked out. Punch a hole in these four points with a screwdriver or similar.
- Hold the cardboard lid where you want to position the luminaire in the ceiling and mark the four points where you would like the wires to be attached and drill holes accordingly





4. Mounting your Denta/Dentaplus in the ceiling

There are two options of mounting kits enclosed with your luminaire.
Use the kit suitable to your needs and preferences.

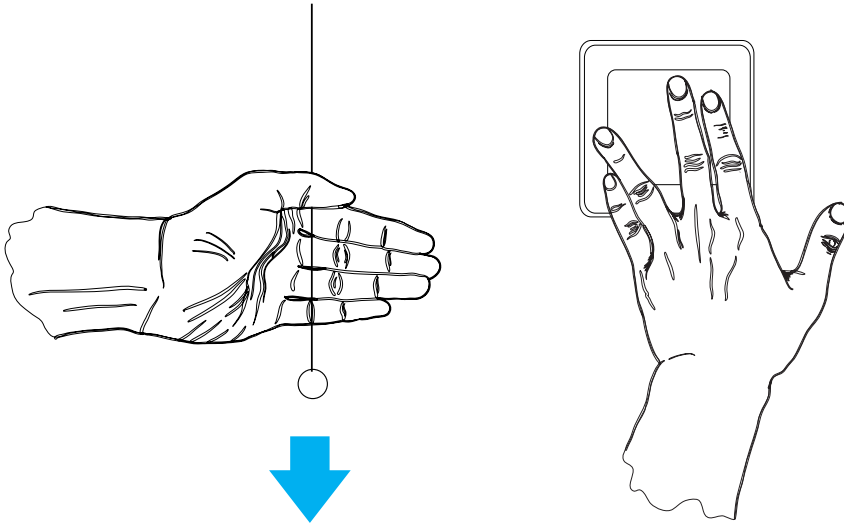


5. Operating your Denta luminaire

The luminaire is operated by a pulling string/cord or, on special requests, by a wall switch. The luminaire could be faded in such a way that the two middle sections of lights are switched off by a pull of the string.

The indirect light is optional and will always be unchanged/constant.

Caution! Ensure you fade out the lamp when working with lightcuring materials.



6. Operating Your Dentaplust luminaire

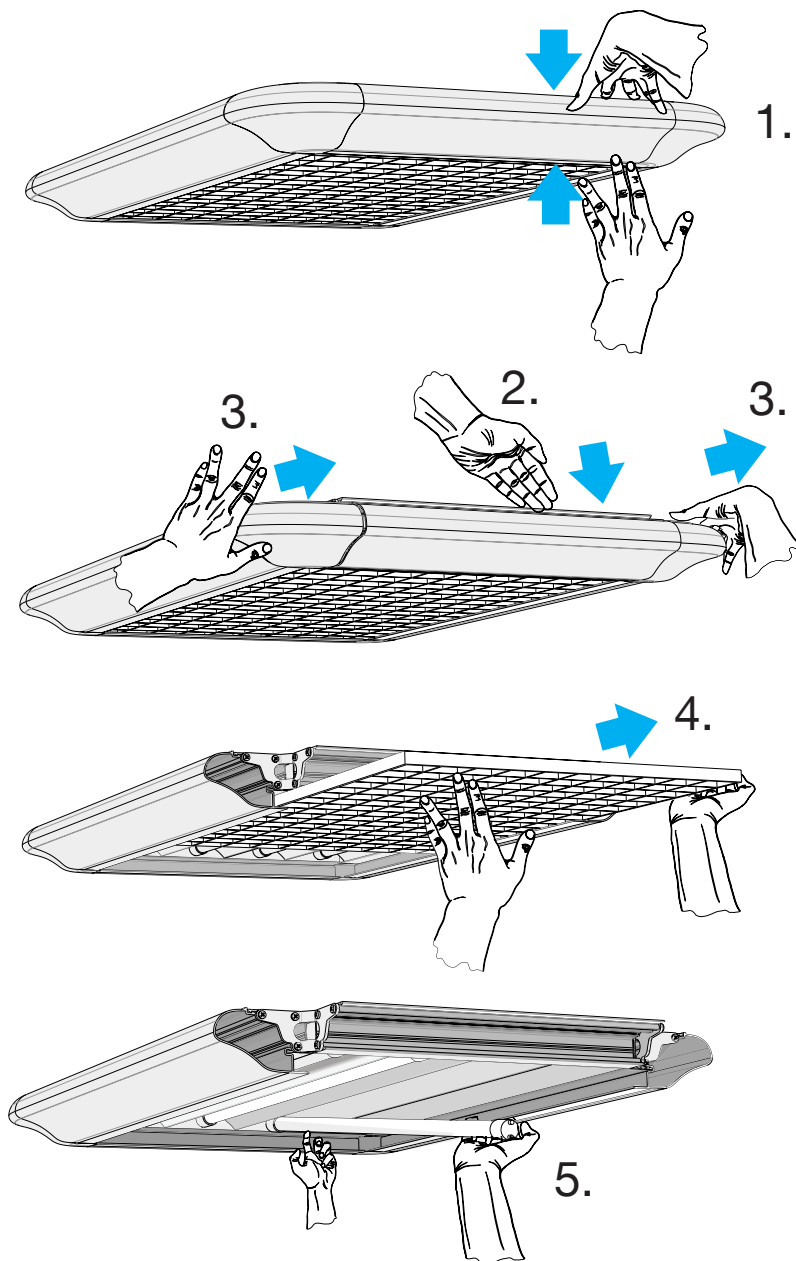
The luminaire is operated by a pulling string/cord or, on special requests, by a wall switch. Instructions to operate the dimmer function:

- Switching the lamp on/off: short pull (<0,5 second)
- Dimming: Long pull (>0,5 second), the dimming direction is changed with each pull.
- To reset: pull and hold the string for approximately 30 seconds

The last dimmer setting is remembered until the next time the luminaire is switched on.

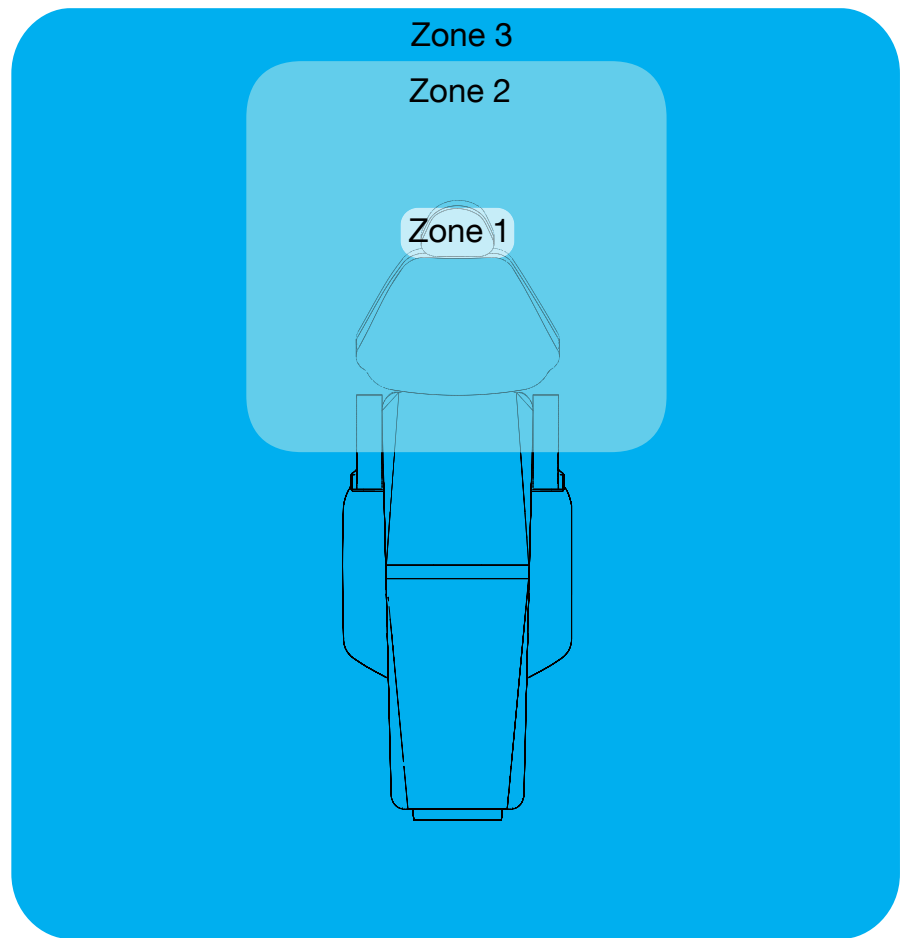
The indirect light is optional and will always remain at the same brightness, that is, unchanged/constant and not affected by the dimming device.

Caution! Ensure you fade out the lamp when working with lightcuring materials.



7. Exchange of fluorescent light tubes

- Denta: 6 x 28 W
- Dentaplus: 6 x 54 W



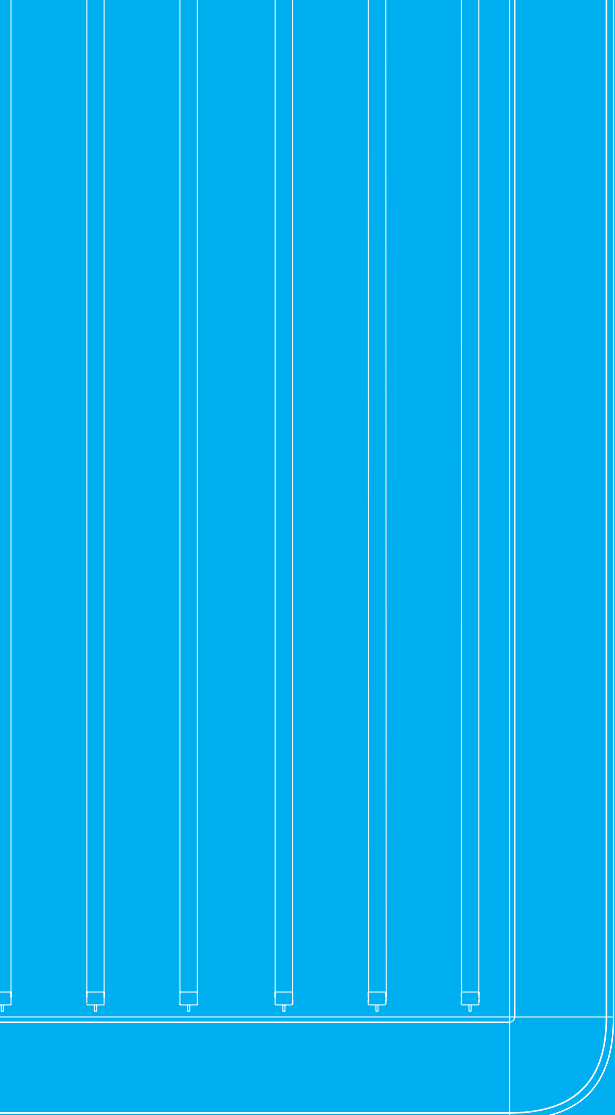
8. General information

Image of recommended light conditions for dentists.

- Zone 1 = 20 - 40 000 lux
- Zone 2 = 3 - 5000 lux
- Zone 3 = 500 - 1000 lux

On-line support
<http://www.d-tec.se/support>

- Owner's manual
- Användarmanual
- Bedienungsanleitung
- Mode d'emploi



Facts: Denta/Dentaplus

- Environmentally friendly and energy-saving
- CDP (conical de-glaring prism)
- Option of indirect light and dimmer
- High intensity of illumination

Denta: 4 000 lux/1,2 m

Dentaplus: 280-5 800 lux/1,2 m

- Size 1 355 x 700 x 55 mm
- Weight 11 kg

D-TEC AB

Varavägen 12

SE-465 94 Nossebro

Tel +46 (0)31 969 302 Fax +46 (0)31 966 092

E-mail mailbox@d-tec.se

www.d-tec.se