

SWISS

# PRODUCTS

2020



**EMS**   
MAKE ME SMILE.

# OUR SWISS PRODUCTS



GBT  
page 4



AIRFLOW® Powder  
page 12



Biofilm Discloser  
page 18



PIEZON® Instruments  
page 26



PERIOFLOW® Nozzle  
page 39



PIEZON® Master 700  
page 23



AIRFLOW® Handy 3.0  
page 20



PIEZON® 150  
page 25



PIEZON® 250  
page 24



Accessories  
page 44



Hygiene Solutions  
page 30



AIRFLOW® Prophylaxis Master  
page 6



AIRFLOW® Handpieces  
page 36



PERIOFLOW® Handpieces  
page 38



PIEZON® Handpieces  
page 40

## LEGEND

### FT-XXX

Order number  
= EMS reference

# THE GBT COMPASS AND ITS

## 08 RECALL

HEALTHY PATIENT = HAPPY PATIENT

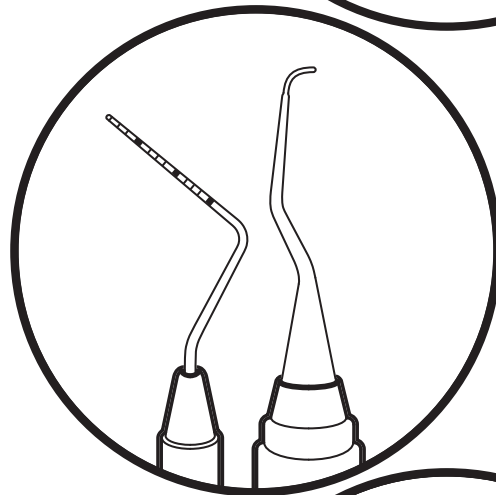
- ▶ Schedule recall frequency according to risk assessment
- ▶ Ask your patient if he or she liked the treatment



## 07 CHECK

MAKE YOUR PATIENT SMILE

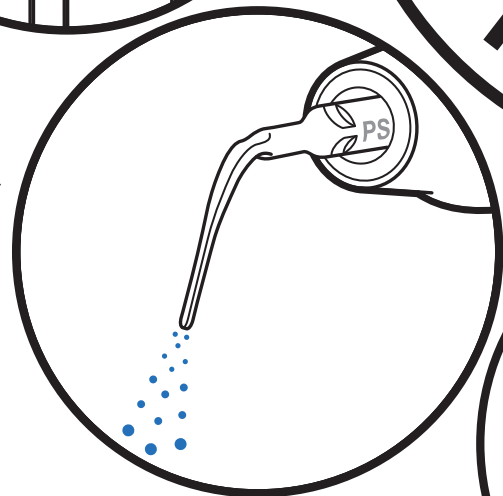
- ▶ Do a final check for remaining biofilm
- ▶ Ensure calculus is fully removed
- ▶ Accurately diagnose caries
- ▶ Protect with fluoride



## 06 PIEZON® PS

REMOVE REMAINING CALCULUS

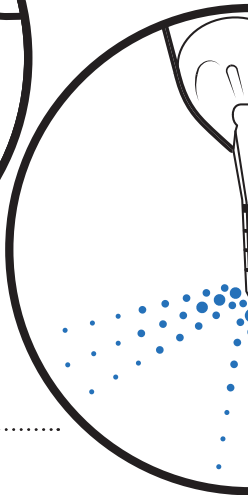
- ▶ Use the minimally invasive EMS PIEZON® PS Instrument supra- and subgingivally up to 10 mm
- ▶ Clean > 10 mm pockets with mini curette
- ▶ Use EMS PIEZON® PI Instrument around implants up to 3 mm and restorations



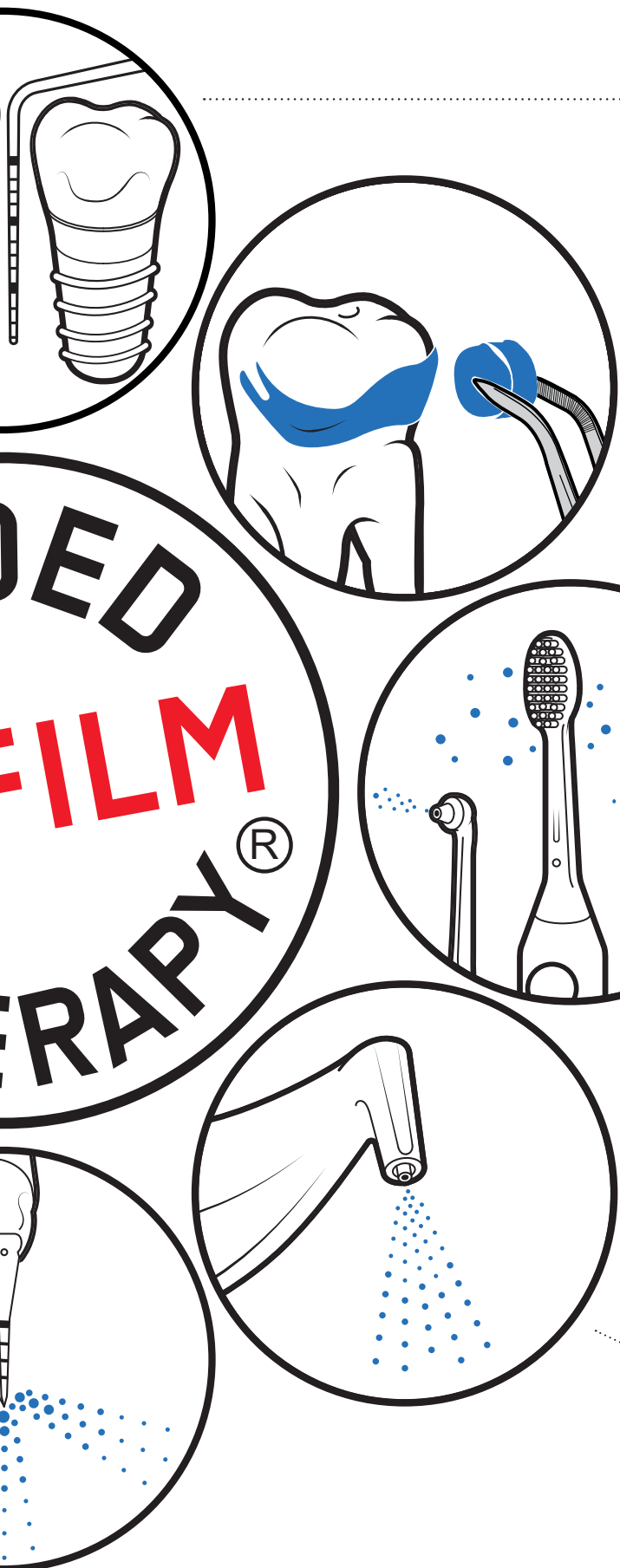
## 05 PERIOFLOW®

REMOVE BIOFILM IN >4 TO 9 MM POCKETS

- ▶ Use AIRFLOW® PLUS Powder on natural teeth in deep pockets and root furcations and on implants
- ▶ Use depth-marked new and slimmer PERIOFLOW® Nozzle



# 8-STEP PROTOCOL



## 01 ASSESS

### PROBE AND SCREEN EVERY CLINICAL CASE

- ▶ Healthy teeth, caries, gingivitis, periodontitis
- ▶ Healthy implants, mucositis, peri-implantitis
- ▶ Start by rinsing with BacterX<sup>®</sup> Pro mouthwash

## 02 DISCLOSE

### MAKE BIOFILM VISIBLE

- ▶ Highlight to patients the disclosed biofilm and their problematic areas with EMS Biofilm Discloser
- ▶ The color will guide biofilm removal
- ▶ Once biofilm is removed, calculus is easier to detect

## 03 MOTIVATE

### RAISE AWARENESS AND TEACH

- ▶ Emphasize prevention
- ▶ Instruct your patients in oral hygiene
- ▶ EMS recommends Philips Sonicare toothbrushes, interdental brushes and Airfloss Ultra

## 04 AIRFLOW<sup>®</sup>

### REMOVE BIOFILM, STAINS AND EARLY CALCULUS

- ▶ Use AIRFLOW<sup>®</sup> for natural teeth, restorations and implants
- ▶ Remove biofilm supra- and subgingivally up to 4 mm using AIRFLOW<sup>®</sup> PLUS 14µm Powder
- ▶ Also remove biofilm from gingiva, tongue and palate
- ▶ Remove remaining stains on enamel using AIRFLOW<sup>®</sup> CLASSIC Comfort Powder

# AIRFLOW® PROPHYLAXIS MASTER

► The new unit from EMS is a game changer that allows to perform Guided Biofilm Therapy under optimum conditions.



1

2018



REF FT-229

1 GOOD DESIGN®, one of the most important Design Prizes in the world from the Chicago Athenaeum Museum of Architecture and Design.

# INCLUDES:



**AIRFLOW® APPLICATION**  
 AIRFLOW® Handpiece  
 Mirror suction canula  
 Easy Clean  
 Water and air filters  
 Maintenance set



**PERIOFLOW® APPLICATION**  
 PERIOFLOW® Handpiece  
 10 PERIOFLOW® Nozzles  
 PI Instrument starting kit



**PIEZON® APPLICATION**  
 PIEZON® LED Handpiece  
 3 x PIEZON® PS Instruments  
 4 spare Light Guides



PLUS and CLASSIC  
 Powder chambers



Wireless boost pedal



PIEZON® bottle



NIGHT CLEANER bottle  
 + 800 ml refill.  
 Clip+Clean accessory



Biofilm  
 Discloser



12 bottles AIRFLOW® PLUS Powder sub-  
 and supragingival  
 2 bottles AIRFLOW® CLASSIC Powder  
 for stains  
 Enough powder to treat around 175 patients

See Accessories p.42

# AIRFLOW® PROPHYLAXIS

► The all-in-one ultracompact prophylaxis station with a futuristic design.

**Includes:**

- Cart
- Cable sleeve
- Installation kit

Recommended for  
AIRFLOW® One:



and for AIRFLOW®  
Prophylaxis  
Master when  
connected to your  
unit's waterline.



REF DW-048B



# STATION



► The ultracompact all-in-one prophylaxis station with a futuristic design. An independent water supply system is integrated directly into the cart for enhanced ergonomics with no need for an external water supply connection.

## Includes:

- Cart
- 800 ml water bottle
- Air filter cartridge
- Cable sleeve
- Installation kit



Recommended for:



AIRFLOW®  
Prophylaxis Master

REF DW-048A

# AIRFLOW® ONE



► For clinicians already equipped with independent PIEZON® units on their chair or tabletops.



REF FT-230

# INCLUDES:



## AIRFLOW® APPLICATION

- AIRFLOW® Handpiece
- Mirror suction canula
- Easy Clean
- Water and air filters
- Maintenance set



## PERIOFLOW® APPLICATION

- PERIOFLOW® Handpiece
- 20 PERIOFLOW® Nozzles



PLUS and CLASSIC  
Powder chambers



Wireless boost pedal



Water bottle



NIGHT CLEANER bottle  
+ 800 ml refill.  
Clip+Clean accessory



Biofilm  
Discloser



12 bottles AIRFLOW® PLUS Powder sub-  
and supragingival  
2 bottles AIRFLOW® CLASSIC Powder  
for stains  
Enough powder to treat around 175 patients

See Accessories p.42

# AIRFLOW® PLUS POWDER

► AIRFLOW® PLUS Powder is a High-Tech powder which remove biofilm and early calculus in a minimally-invasive way from all types of surfaces:

- Enamel
- Dentine
- Soft tissue
- Tongue and palate
- Primary teeth
- Orthodontic appliances
- Implant surfaces
- Restorations

No pain, no salty taste.  
Your patients will love it.



Innovation  
1<sup>st</sup> Prize\*

► The Erythritol based PLUS Powder can be applied supra- and subgingivally. The particle size of PLUS Powder is only 14µm.



4 x 120 g = 480 g

REF DV-082/A

# ONE POWDER ONLY

## FOR 90% OF ALL CASES



**OPTIMAL COMFORT**  
**MINIMALLY INVASIVE**  
**MAXIMALLY PREVENTIVE**

### TEETH

- ▶ Primary and permanent teeth
- ▶ Interdental spaces
- ▶ Crowded teeth
- ▶ Exposed dentine
- ▶ Pits and fissures
- ▶ Demineralized enamel

### CARIES MANAGEMENT

- ▶ Before caries detection
- ▶ Before sealing
- ▶ Before fluoridation

### SOFT TISSUES

- ▶ Sulcus
- ▶ Shallow pockets up to 4mm
- ▶ Deep pockets >4 to 9mm
- ▶ Tongue and palate

### ORTHODONTICS

- ▶ Orthodontic brackets
- ▶ Patients with Invisalign

### AESTHETIC DENTISTRY

- ▶ Crowns and veneers
- ▶ Before placing restorations
- ▶ Before bleaching

### IMPLANTS

- ▶ Peri-implant sulcus
- ▶ Deep peri-implant pockets.



# AIRFLOW® POWDER CLASSIC ► COMFORT

## On enamel ONLY

► Our sodium bicarbonate powder now features a new formula: the AIRFLOW® CLASSIC Comfort with 40µm mean particule size for enhanced comfort.  
No salty taste.



- 40µm
- Sodium bicarbonate



Lemon flavor  
4 x 300g = 1200g REF DV-048/A/LEM



Cherry flavor  
4 x 300g = 1200g REF DV-048/A/CHE



Mint flavor  
4 x 300g = 1200g REF DV-048/A/MIN



Neutral  
4 x 300g = 1200g REF DV-048/A/NEU



Tutti frutti  
4 x 300g = 1200g REF DV-048/A/TUT

# AIRFLOW<sup>®</sup> GLYCINE POWDERS



Subgingival + supra-  
gingival for biofilm  
removal only.

- ▶ 25µm
- ▶ Glycine

▶ Historically the first subgingival AIRFLOW<sup>®</sup> Powder.  
No salty taste.



4 x 120g = 480g

REF DV-070/A



- ▶ 65µm
- ▶ Glycine

▶ Supragingival powder for enamel and hybride composites.  
No salty taste.



4 x 200g = 800g

REF DV-071/A

# ONLY USE EMS POWDERS!

▶ EMS powders are much less abrasive than traditional mechanical debridement techniques such as rubber cups and handscaling.

We recommend to use AIRFLOW<sup>®</sup> and PERIOFLOW<sup>®</sup> first, followed by PIEZON<sup>®</sup>. GBT: the minimally invasive way for Professional Mechanical Plaque Removal (PMPR).

▶ As part of the GBT disclosing phase, coloration also minimizes AIRFLOW<sup>®</sup> abrasion. No more color signifies that all biofilm has been removed: the objective of AIRFLOW<sup>®</sup> is achieved, to preserve the integrity of dental tissues.

⚠ EMS devices have been designed and tested for exclusive use with EMS prophylaxis powders.

## ! ONLY USE EMS POWDERS



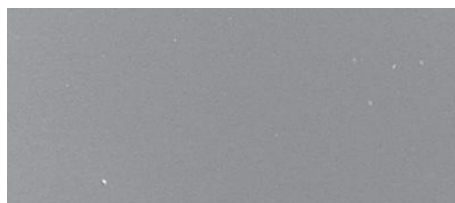
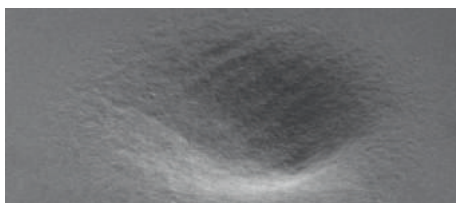
Barnes' study



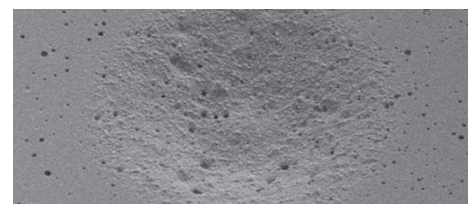
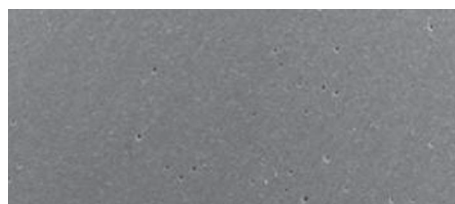
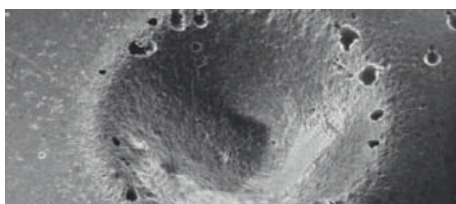
OSSPRAY  
CALCIUM SODIUM  
PHOSPHOSILICATE<sup>1</sup>

EMS AIRFLOW<sup>®</sup> PLUS  
POWDER ERYTHRITOL<sup>2</sup>

EMS SODIUM  
BICARBONATE<sup>3</sup>



EFFECT OF 5 SEC AIR POLISHING ON HUMAN ENAMEL



EFFECT OF 5 SEC AIR POLISHING ON GLASS IONOMER

1. Barnes CM, et al. J Clin Dent 2014;25:76-87. | 2. For AIRFLOW<sup>®</sup> PLUS Powder complimentary tests have been submitted to the J Clin Dent (Barnes CM, et al.). | 3. Barnes CM, et al. J Clin Dent 2014;25:76-87. In the study by Barnes, J Clin Dent 2014, the EMS sodium bicarbonate had a particle size of 65 µm. New Powder AIRFLOW<sup>®</sup> CLASSIC Comfort has 40 µm particle size, for more smoothness and patient comfort.



# ONLY USE THE ORIGINAL

## RECOMMENDED



## OTHER EMS POWDERS

Name	PLUS	CLASSIC COMFORT	CLASSIC	SOFT	PERIO	
Ref	DV-082	DV-048	DV-048/ LEM/65	DV-071	DV-070	
Flavor	NEUTRAL	LEMON MINT CHERRY NEUTRAL	LEMON	NEUTRAL	NEUTRAL	
Composition	ERYTHRITOL	SODIUM BICARBONATE	SODIUM BICARBONATE	GLYCINE	GLYCINE	
Particle size	~14µm	~40µm	~65µm	~65µm	~25µm	
pH	~7	~8.1	~8.1	~6	~6	
Teeth	Stains and early calculus	✓	✓	✓	✗	
	Enamel	✓	✓	✓	✓	
	Enamel white spots	✓	✗	✗	✗	✓
	Pits and fissures	✓	✗	✗	✗	✗
	Dentine	✓	✗	✗	✗	✓
Soft tissues	Gingiva	✓	✗	✗	✓	
	Tongue and palate	✓	✗	✗	✓	
Restorations	Hybrid composite	✓	✗	✗	✓	
	Glass ionomer	✓	✗	✗	✓	
Implants	...and peri-implant tissues	✓	✗	✗	✓	
Orthodontics	Brackets and appliances	✓	✗	✗	✓	



**SO-CALLED "EMS COMPATIBLE" POWDERS IN THE MARKETPLACE MAY CAUSE DAMAGE TO ORAL TISSUES AND THE DEVICE. SEE BELOW A DAMAGED AIRFLOW NOZZLE AFTER USE WITH A "COMPATIBLE" POWDER. IF EMS PRODUCTS ARE DAMAGED BY USING "COMPATIBLE" POWDERS THE PRODUCT WARRANTY WILL BE LOST.**



Damaged handpiece

# WHY MAKE BIOFILM VISIBLE?

- ▶ With GBT we intend to eliminate all the Biofilm, also in the difficult to access areas.
- ▶ If Biofilm is made visible, it is removed much faster with GBT.
- ▶ What you see is what you remove. Color removal = Biofilm removal. Also on soft tissues.
- ▶ The users of hand instruments, rubber cups and “polishing” paste do not like to disclose biofilm as they would need much more time to finish the treatment.
- ▶ The German Stiftung Warentest reported that the conventional prophylaxis only removes 50% of Biofilm in the difficult to access areas.
- ▶ Colored teeth and gums will also motivate the patient to do a better homecare – OHI.



This 14 year old patient has a significant lack of oral hygiene. Disclosing agent reveals massive acidogenic biofilm.

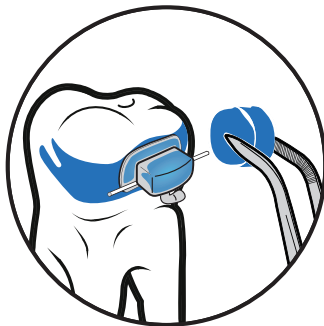
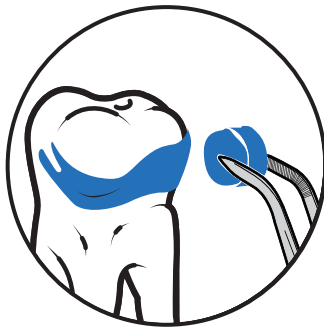
Courtesy, Dr. Gleb Aseev

# BIOFILM DISCLOSER



- ▶ A new discloser for Biofilm was developed by EMS.
- ▶ The EMS Biofilm Discloser visibly reveals the presence of early and mature biofilm.

## ▶ 250 DISCLOSING PELLETS



- ▶ Pre-soaked pellets for 2 tone biofilm disclosure.  
Reddish for new biofilm - Blue for mature biofilm

### MAKE BIOFILM VISIBLE:

Highlight to patients the disclosed biofilm and their problematic areas. The color will guide the biofilm removal with AIRFLOW® PLUS Powder. Once biofilm is removed, calculus is easier to detect.

1 box with 250 pellets

REF DV-158

# AIRFLOW® HANDY 3.0

- ▶ Unique AIRFLOW® Handy designed for AIRFLOW® PLUS Powder.



PERIOFLOW®  
Nozzle with depth  
marks.



Easy Clean  
See page 36



Easy Fill

See Accessories p.47

# 4 CONFIGURATIONS

## PREMIUM



### Includes:

- AIRFLOW® PLUS Handpiece
- PERIOFLOW® Handpiece
- 40 PERIOFLOW® Nozzles
- Easy Clean
- Easy Fill
- Maintenance set
- 1 bottle + 4 bottles at product registration\*

**REF FT-225#ADAPTER**

See page 22

## PLUS



### Includes:

- AIRFLOW® PLUS Handpiece
- Easy Clean
- Easy Fill
- Maintenance set
- 1 bottle + 4 bottles at product registration\*

**REF FT-221#ADAPTER-PLUS**

See page 22

## PERIO



### Includes:

- PERIOFLOW® Handpiece
- 40 PERIOFLOW® Nozzles
- Easy Clean.
- Easy Fill
- Maintenance set
- 1 bottle + 4 bottles at product registration\*

**REF FT-221#ADAPTER-PERIO**

See page 22

## SUPRA



### Includes:

- AIRFLOW® Handpiece
- Easy Clean
- Easy Fill
- Maintenance set
- 1 Bottle

**REF FT-220#ADAPTER**

See page 22

\*For EU only

# AIRFLOW<sup>®</sup> YOUR UNIT

► Simply plug your Handy on the turbine of your unit FOR ALL AIRFLOW<sup>®</sup> applications. Available adapters for turbine connections:

Write this adapter reference on your order number:



# Midwest  
Universal connector



# Kavo



# Sirona



# W&H



# NSK



# Castelini



# Bienair



# Borden



# PIEZON® MASTER 700



## STANDARD

## PREMIUM



### Includes:

- 1 PIEZON® LED Handpiece
- PIEZON® A, P, PS Instruments
- 2 PIEZON® irrigant bottles 350 ml
- Steribox
- Maintenance set
- Multifunctional foot pedal
- 1 Magnetic handpiece holder

### Includes:

- 2 PIEZON® LED Handpiece
- PIEZON® A, P, PS Instruments
- 2 PIEZON® irrigant bottles 350 ml
- Steribox
- Maintenance set
- Multifunctional foot pedal
- 2 Magnetic handpiece holders

REF FT-194#STD

REF FT-194#PREM

See Accessories p.45

# PIEZON® 250



reddot design award

► Compact solution with stand-alone irrigation bottle.

## Includes:

- 1 PIEZON® Handpiece
- PIEZON® Instruments A, P, PS
- 1 PIEZON® irrigant bottle 350 ml
- Maintenance set
- 2-function foot pedal



Convenient finger-tip control – designed for intuitive use



REF	LED	FT-224
REF	No LED	FT-216

See Accessories p.46



# PIEZON® 150

► External water filter for enhanced infection control.

**Includes:**

- 1 PIEZON® Handpiece
- PIEZON® Instruments A, P, PS
- Maintenance set
- 2-function foot pedal



Soft Perio power zone for ultimate comfort



REF	LED	FT-223
REF	No LED	FT-215

See Accessories p.46

# SWISS INSTRUMENTS

▶ The slogan "I feel good" was launched when EMS invented the Swiss PIEZON® PS Instrument.

▶ The Original Swiss PIEZON® PS Instrument will do 95 % of all scaling. No need for different instruments - this makes work easier.

For the remaining 5%, EMS has a new solution: the PIEZON® PSR and PSL Instruments.

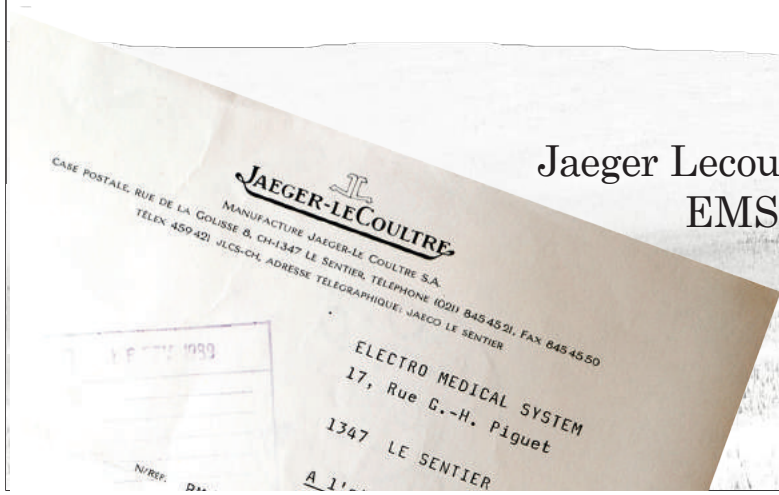


PIEZON® PS Instrument

▶ The PIEZON® piezo-ceramic technology was invented by Pierre Mabille, co-founder of EMS.

## DID YOU KNOW?

The prestigious Swiss watchmaker Jaeger Lecoultre was the first partner to develop EMS Swiss Instruments when EMS was still a startup long before the Company's EMS Research Center and Manufacture was built in Nyon, Switzerland.





# ONLY USE THE SWISS ORIGINAL EMS INSTRUMENTS!



Policy of FDI - World Dental Federation:

“The policy is intended to help ensure dental products are safe for patient care and conform to manufacturers’ specifications, international standards and government regulations.”

Following the FDI statement on „Non Compliant Dental Products“, please be aware that EMS devices have been designed and tested for the exclusive use with EMS PIEZON® Instruments.

The EMS Instrument, the Handpiece and the NO PAIN Electronic module have to vibrate in harmony like in a Trilogy.  
Using so-called “compatible” and copy tips from third parties can damage your patients teeth and EMS Handpieces.  
They were developed and made by EMS for each other.  
One PS Instrument is designed for up to 2000 treatments.  
The cost of one use of a PS instrument is only 5 cents. There is absolutely no reason to "save" money here and to use "compatible" tips . If the Piezon Handpiece will be damaged (the thread) it will lose its Warranty.  
At the end of the day “compatible” tips will always cost you more



# PIEZON<sup>®</sup> INSTRUMENTS

## PS INSTRUMENT

Universal instrument for sub- and supragingival PIEZON<sup>®</sup>.  
Best interproximal access suitable in 95% of all cases.



FRONT SIDE

REF DS-016A

REF DS-016A/T (X3)

## PI INSTRUMENT

Implant cleaning.  
High-tech polymer PEEK.  
Recommended for implants and restorations.  
Place the PI Instrument on the 120° file holder.



REF DT-065A (X4)

## FILE HOLDER 120°

For PI Instruments and a whole lot more.



REF DS-010A

## PSL INSTRUMENT\*

Easier approximal, mesial and distal access, supra- and subgingival.



REF DS-083A

## PSR INSTRUMENT\*

Easier approximal, mesial and distal access, supra- and subgingival.



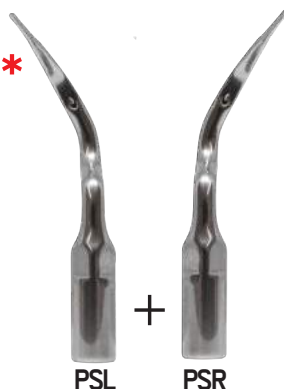
REF DS-084A

# YOU ONLY NEED 4



## PSR & PSL INSTRUMENTS\*

Easier approximal,  
mesial and distal access,  
supra- and subgingival.



REF FS-461

Use with :



\*If available in your country

# HYGIENE SOLUTIONS

## NIGHT CLEANER



► NIGHT CLEANER delivers easy-to-use long-term cleaning and disinfection. Keep the waterline of your unit “biofilm free”.

**PROCEDURE IS 100% AUTOMATIC  
LESS THAN 10 SECONDS IN THE EVENING  
THE COST IS LESS THAN 50 CENTS PER DAY  
CLEANS BOTH AIRFLOW® AND PIEZON® LINES**

Use with :



**6 X 800 ML NIGHT CLEANER**  
6 month's use.

**REF DV-154-A**

# WATERLINE HYGIENE



## EMS - ULTRA CLEAN



► With 6% hydrogen peroxide, EMS Ultra Clean allows for the daily disinfection of PIEZON® tabletop devices.



**EMS - ULTRA CLEAN**  
6 x 1000 ml

REF MUC-006

# BACTERX<sup>®</sup> PRO



Contains 0,1% chlorexidine gluconate, with or without alcohol.

## FOR THE PATIENT

### Home care prophylaxis

Use short-term only upon recommendation of your dental clinician.



**50X WITHOUT ALCOHOL** REF DV-115/A  
50 x 100 ml bottles



**50X WITH ALCOHOL** REF DV-116/A  
50 x 100 ml bottles



## IN THE PRACTICE

### Patient mouth cleaning.

Professional use in dental practices prior to professional dental treatment: minimum 30 seconds rinsing.



**WITHOUT ALCOHOL**  
4x 1l bottles

REF DV-114/A



**WITH ALCOHOL**  
4x 1l bottles

REF DV-113/A

## FOR PIEZON® TREATMENTS

### Antimicrobial irrigation liquid

Professional use in dental practices as ultrasonic scaling irrigation liquid.

Use with :



# HYGIENE ACCESSORIES

## CLIP + CLEAN



REF EL-655

Compatible with :



- ▶ The CLIP+CLEAN secures the AIRFLOW® and PIEZON® cords to the spitte while performing the daily NIGHT CLEANER procedure.
- ▶ CLIP+CLEAN is the tap protection for your device when no bottle is connected.

## EASY CLEAN



REF FV-083



- Use Easy Clean after each AIRFLOW® and PERIOFLOW® treatment, before sterilizing your handpieces.
- Prevents and in some cases solves handpiece clogging.
- Simply use the Easy Clean with water syringe
- No need for needles anymore.

Compatible with all AIRFLOW® and PERIOFLOW® Handpieces:



## NOZZLE REMOVER



REF DT-095

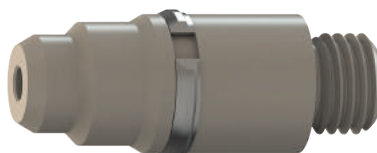


- Install and remove your PERIOFLOW® Nozzles from the handpiece.

Compatible with all PERIOFLOW® Handpieces :



## THERMODISINFECTION ADAPTER



REF FV-088

- Connect Handy 3.0 Handpieces to thermodisinfection unit.

Use with:



# AIRFLOW® HANDPIECES

## AIRFLOW® HANDPIECE

REF FS-457

- ▶ AIRFLOW® Handpiece
- ▶ Easy Clean
- ▶ AIRFLOW® cord O-ring set

135°C  
SSS > 1000 cycles

DAC



## SO SIMPLE !

Use Easy Clean after each AIRFLOW® and PERIOFLOW® treatment, before sterilizing your handpieces. Prevent and in some cases solve handpiece clogging. Simply use the Easy Clean with water syringe. No need for needles anymore.

135°C  
SSS

EASY CLEAN



REF FV-083



► Dedicated handpieces for optimum ergonomics.



REF EL-545#

135°C  
SSS > 1000 Cycles

DAC

Adapter, see page 22

Use with:



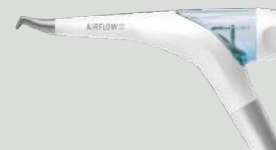
REF EL-540#

135°C  
SSS > 1000 cycles

DAC

Adapter, see page 22

Use with :



REF EL-185#A

135°C  
SSS > 1000 cycles

DAC

Adapter

Use with :



# PERIOFLOW® HANDPIECES

## PERIOFLOW® APPLICATION

REF FS-466

- ▶ PERIOFLOW® Handpiece
- ▶ 20 new PERIOFLOW® Nozzles
- ▶ Nozzle remover

135°C  
SSS > 1000 cycles

DAC



- ▶ Dedicated handpieces for optimum ergonomics.



REF EL-542#

135°C  
SSS > 1000 cycles

DAC



Adapter, see page 22

Use with:



► EMS pioneered deep-pocket biofilm removal therapy with its PERIOFLOW® technology.

With several successive improvements made by EMS to the nozzle, its second-generation is thinner; more recently the introduction of depth marks has made deep-pocket therapy safer and more efficient.



► EMS is the only company with published clinical evidence on the safety, efficiency and comfort of PERIOFLOW®.

#### 40 NEWS PERIOFLOW® NOZZLES

With depth markings



REF DT-476

#### 160 NEWS PERIOFLOW® NOZZLES

With depth markings



REF DT-476A

Use with:



# PIEZON® HANDPIECES

## PIEZON® HANDPIECE

REF FS-455

- ▶ PIEZON® LED Handpiece
- ▶ PIEZON® PS Instrument
- ▶ 4 spare Light Guides

135°C  
SSS > 1000 cycles

DAC



- ▶ For DAC compatibility, the light guide must be removed. Light guide does not resist DAC oil lubrication and residue.

## NO LED HANDPIECE

Universal PIEZON® Original handpiece

REF EN-061

135°C  
SSS > 1000 cycles

DAC



Use with:





► Older-generation PIEZON® handpieces were not LED-compatible.

### NO LED HANDPIECE

Universal PIEZON® Original handpiece

REF EN-041



### NO LED HANDPIECE

Universal PIEZON® Original handpiece

REF EN-046



► For older devices and handpieces, please contact our after-sales service: [ems-dental.com/contact](http://ems-dental.com/contact)

135°C  
SSS > 1000 cycles



Use with:



### COMBITORQUE

Unique combination of torque wrench and instrument holder.

135°C  
SSS > 1000 cycles

DAC



REF FV-097



# ACCESSORIES



## FOOT PEDAL

Boost and wireless pedal

EK-404B

Wired, no boost pedal

EK-410A



## CORD

AIRFLOW® cord

EM-145A

PIEZON® cord (AFPM)

EM-146A



## POWDER CHAMBER

PLUS powder chamber - red

EL-607

CLASSIC powder chamber - white

EL-606

## BOTTLES

PIEZON® bottle - ml graduation (AFPM)

EG-111A

Water bottle - no graduation (AFOne)

EG-121A

NIGHT CLEANER bottle - blue

EG-120A



## HYGIENE

3x water filters - blue

FV-094

Air filter - white

EL-599

Easy Clean

FV-083

Clip+Clean

EL-655



# AIRFLOW® MASTER AND AIRFLOW® MASTER PIEZON®



## FOOT PEDAL

Multifunctional foot pedal

EK-169#



## CORD

AIRFLOW® cord

EM-105A

PIEZON® cord

EM-111A

Magnetic handpiece holder right

FV-077



Magnetic handpiece holder left

FV-078

Connecting cable

EK-186#



## POWDER CHAMBER

AIRFLOW® powder chamber

EL-368#

AIRFLOW® PERIO and PLUS powder chamber

EL-474#



## BOTTLES (AFMP only)

Bottle 350 ml

EG-064

Bottle 500 ml

EG-082



## HYGIENE

Water filter set

EQ-125

Peristaltic pump set (AFMP only)

BA-035C

Easy Clean

FV-083

Easy Fill

FV-082



# AIRFLOW® S1 AND AIRFLOW® S2



## FOOT PEDAL

Foot pedal

EH-004



## CORD

AIRFLOW® cord (S1 and S2)  
PIEZON® cord (S2)

EM-094

EM-060

## HYGIENE

Water filter

EQ-029

Water filter wrench

DT-015

Easy Clean

FV-083



# PIEZON® MASTER 700



## FOOT PEDAL

Multifunctional foot pedal

EK-169#



## CORD

PIEZON® cord

EM-110A

Magnetic handpiece holder right

FV-077

Magnetic handpiece holder left

FV-078



Connecting cable

EK-186#



## BOTTLES

Bottle 350 ml

EG-064

Bottle 500 ml

EG-082



## HYGIENE

Peristaltic pump set

BA-035C

# PIEZON® 150 AND PIEZON® 250



## FOOT PEDAL

2 Functions foot pedal

EK-128



## CORD

PIEZON® cord

EM-140/A



## HYGIENE

Peristaltic pump set  
Water filter set

BA-035B

FV-084



## BOTTLES

Bottle 350 ml  
Bottle 500 ml

EG-064

EG-082

# HANDY 3.0 AND HANDY 2+



## CAP

Cap  
Cap sealing O-ring

EL-529  
FV-087



## HYGIENE

Easy Clean  
Easy Fill

FV-083  
FV-074



Thermal disinfection adapter

FV-088



## CAP

Transparent cap  
Cap ring  
Cap sealing O-ring

AB-171A/A  
AB-172#COLOR  
EQ-157



## HYGIENE

Easy Fill

FV-075

# FROM THE VALLEY TO

► For more than 35 years EMS has developed high-end technologies and protocols, enabling the patients to enjoy natural teeth and implants for much longer.

„*Primum non nocere*“\* and minimal invasiveness are not only a must. This is our philosophy at EMS.



EMS RESEARCH AND MANUFACTURE CENTER  
NYON, **SWITZERLAND**



# THE TOP



MONT BLANC, 4807M



CONTACT US:  
[ems-dental.com/contact](https://ems-dental.com/contact)  
T. +41 22 99 44 700  
F. +41 22 99 44 701

# GLOSSARY

	<b>PAGE</b>		<b>PAGE</b>
Adapter (Handy)	22	Glycine	15
AIRFLOW® CLASSIC Powder	14	Handpiece, AIRFLOW®	36
AIRFLOW® Handy 3.0	20	Handpiece, PERIOFLOW®	38
AIRFLOW® Handy 3.0 PERIO	21	Handpiece, PIEZON®	40
AIRFLOW® Handy 3.0 SUPRA	21	NIGHT CLEANER	30
AIRFLOW® Handy 3.0 PLUS	21	PERIOFLOW® Nozzle	39
AIRFLOW® Handy 3.0 PREMIUM	21	PERIO Powder	15
AIRFLOW® Handy adapters	22	PIEZON® 150	25
AIRFLOW® One	10	PIEZON® 250	24
AIRFLOW® PERIO Powder	15	PIEZON® Instrument	26
AIRFLOW® PLUS Powder	12	PIEZON® Master 700	23
AIRFLOW® Prophylaxis Master	06	PIEZON® PS Instrument	28
AIRFLOW® SOFT Powder	15	PLUS Powder	12
BacterX® Pro	32	SOFT Powder	15
CombiTorque®	41	Station	08
Clip+Clean	34	Ultra Clean	31
Easy Clean	34		
GBT, Guided Biofilm Therapy	4		



## HEADQUARTER

CH

**NYON, SWITZERLAND**  
**ELECTRO MEDICAL SYSTEMS SA**  
Chemin de la Vuarpillière 31  
CH - 1260 Nyon  
www.ems-dental.com/en/contact  
www.ems-dental.com  
T. +41 22 99 44 700  
F. +41 22 99 44 701



## WORLDWIDE EMS AFFILIATES

DE

**MUNICH, GERMANY**  
**EMS ELECTRO MEDICAL SYSTEMS GMBH**  
Schatzbogen 86  
DE - 81829 München  
T. +49 89 42 71 61 0  
F. +49 89 42 71 61 60  
E-mail: info@ems-ch.de

PL

**KATOWICE, POLAND**  
**EMS POLAND SP. Z O.O.**  
Al. Roździeńskiego 188H  
PL - 40-203 Katowice  
T. +48 32 4937060  
E-mail: info@ems-poland.com

FR

**FONCINE, FRANCE**  
**EMS ELECTRO MEDICAL SYSTEMS FRANCE SARL**  
32, route de Pontarlier  
FR - 39460 Foncine-le-Haut  
T. +33 84 51 90 01  
F. +33 3 84 51 94 00  
E-mail: info@ems-france.fr

US

**DALLAS, USA**  
**EMS CORPORATION**  
11886 Greenville Avenue , Ste 120  
US - Dallas, Texas 75243  
T. +001 972 690 8382  
F. +001 972 690 8981  
E-mail: info@ems-na.com

ES

**MADRID, SPAIN**  
**EMS ELECTRO MEDICAL SYSTEMS ESPAÑA SLU**  
C/ Tomás Bretón, 50-52 2ª planta  
ES - 28045 Madrid  
T. +34 91 528 99 89  
E-mail: info@ems-espana.com

AU

**SYDNEY, AUSTRALIA**  
**E.M.S. ELECTRO MEDICAL SYSTEMS OCEANIA**  
Unit 1, Building 4 – Sydney Corporate Park  
160 Bourke Road  
AU - Alexandria, NSW 2015  
T. +61 405 095 867  
E-mail: info@ems-oceania.com

IT

**MILANO, ITALY**  
**EMS ITALIA S.R.L**  
Via Faravelli 5  
IT - 20149 Milano  
T. +39 02 3453 8111  
E-mail: dental@ems-italia.it

JP

**TOKYO, JAPAN**  
**E.M.S. JAPAN BRANCH OFFICE**  
5F, 4-6-5 Nihombashi-Muromachi, Chuo-ku  
JP - Tokyo 101-0022  
T. +81(0) 3 3278 0375  
F. +81 (0) 3 3278 0376  
E-mail: emsjapan@ems-ch.com

UK

**CAMBRIDGESHIRE, ENGLAND**  
**EMS UK LTD SUITE 2**  
Xenus House  
Sandpiper Court  
Phoenix Park - Eaton Socon  
UK - St Neots, Cambridgeshire  
PE19 8EP  
T. +44 01480 587260  
Email: info@ems-unitedkingdom.com

CN

**SHANGHAI, CHINA**  
**医迈斯电子医疗系统贸易(上海)有限公司**  
**E.M.S. ELECTRO MEDICAL SYSTEMS TRADING (SHANGHAI) CO., LTD.**  
24A, Jin Sui Mansion,  
N°379 Pudong Nan Rd.  
CN - Shanghai 200120  
Tel. +86 21 3363 2323  
E-mail: emschina@ems-ch.com

JO

**AMMAN, JORDAN**  
**EMS ELECTRO MEDICAL SYSTEMS JORDAN**  
No.2 - second floor, 195 Arar (Wadi Saqra) str.  
JO - Amman  
T. +962790228060



Copyright: 2020 EMS.  
E.M.S. Electro Medical Systems S.A.  
Ch. de la Vuarpillière 31  
1260 Nyon - Switzerland  
+41229944700 - [ems-dental.com](http://ems-dental.com)

**EMS**   
MAKE ME SMILE.