

CS 3700

Scanning
uncompromised.



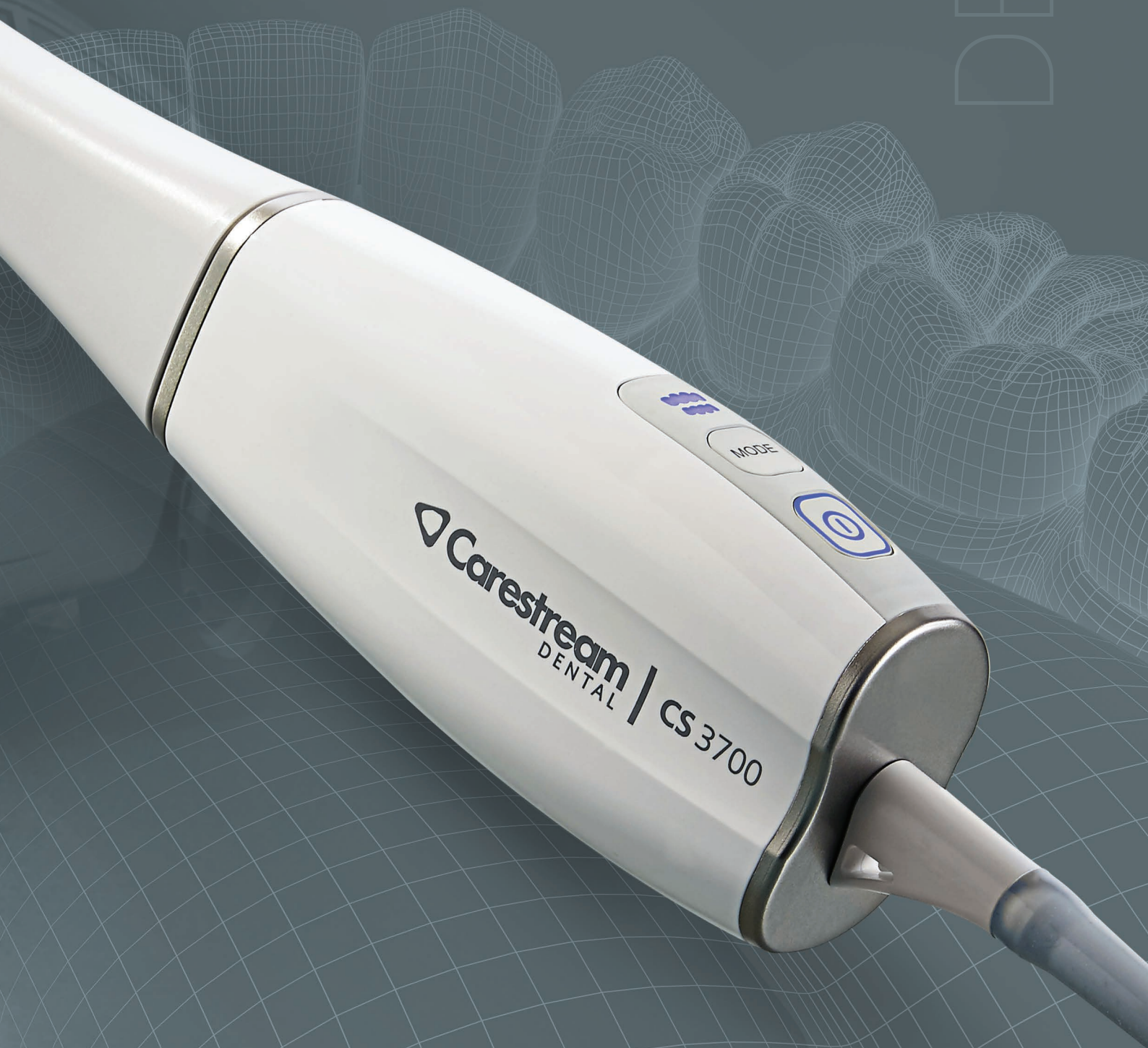
Design by
STUDIO F·A·PORSCHE

A man with a beard and short hair, wearing a light-colored polo shirt, is sitting on the hood of a dark-colored car. He is smiling and looking towards the camera. The background is a dense, dark green foliage. In the foreground, there is a white, angular object, possibly a part of a medical device, and a wireframe mesh overlay that appears to be a stylized representation of a human figure or a complex structure. The overall image has a dark, moody aesthetic with a semi-transparent overlay.

"Design must be honest."

— Prof. Ferdinand Alexander Porsche

Design isn't simply decoration or superficial beautification. Instead, design is a perfect symbiosis of form and function. For this to be achieved, one must fully grasp an object's functionality. The object at grasp is the CS 3700. Collaboratively designed with Studio F. A. Porsche, the CS 3700 combines a user-centric form with a workflow focusing on patient and practitioner.



PERFORMANCE

High performance: A hallmark of Studio F. A. Porsche.

Ergonomic design perfected by Studio F. A. Porsche. Advanced functionality centered around your personal workflow needs. Performance that sets a new bar for intraoral scanning. The CS 3700 doesn't simply improve scanning. It redefines it.

Setting the tone.

Available in Arctic White and Carbon Grey, so you can match the aesthetics of your practice.





Shades of intelligence.

Patented Smart-shade matching provides automatic selection and recording of shade information.

Workflow freeflow.

Revolutionary new workflow lets users navigate freely among different clinical applications, including restorative, orthodontic, implant and sleep device.

Gripping curves.

An ergonomically optimal grip channel empowers oral health professionals with a balanced sense of scanner control.

The added touch.

Touchscreen capability eliminates the extra steps of operation caused by switching back and forth between the scanner and the mouse.

Precision, accelerated.

The CS 3700 features turbo speed scanning that's tested and proven to scan in vitro single arches in 30 seconds,¹ with the same proven accuracy as the CS 3600.

Strapping in.

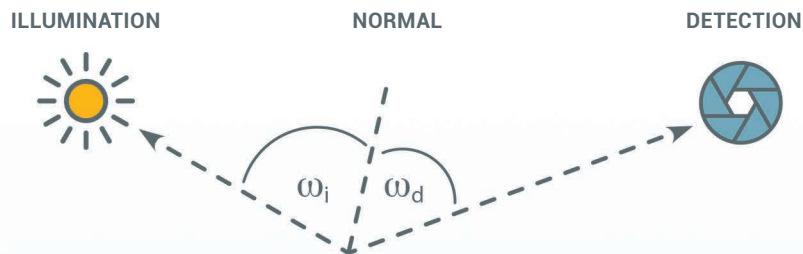
The optional wrist strap connects user to the device for optimal control and care of the scanner.

Show your true colors.

Our patented Smart-shade color matching technology analyzes more data than other intraoral scanners, automatically detecting the enamel color of the scan area to identify the ideal match.

We approach color from all angles.

We don't determine the shade from a single RGB value. Instead, the CS 3700 features Bidirectional Reflectance Distribution Function (BRDF), which uses triangulation to factor in both the direction of illumination and the detection, providing more true-to-life color matching.



Shades of intelligence.

Unlike other systems, which collect color values from a single view, the CS 3700 collects actual shade values from several views of the tooth surface, leading to a more accurate match.

OTHERS:

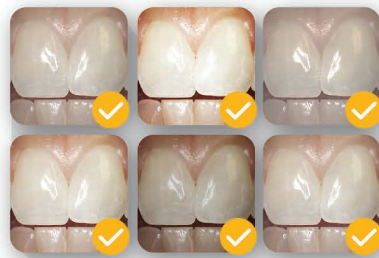
Texture-Based Shade Matching



VS.

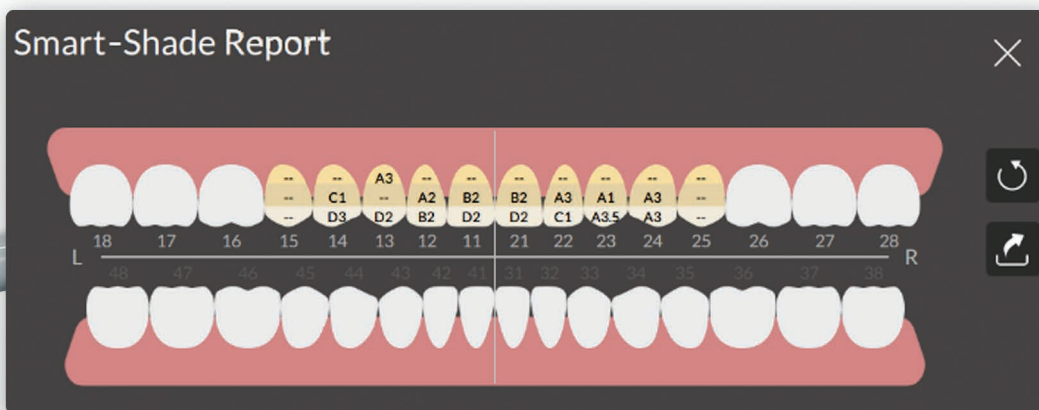
CS 3700

BRDF



Smart-shade matching report.

In a single click, Smart-shade matching automatically generates a shade report for the selected area of interest, allowing users to easily share the outcome with the dental lab or referral.

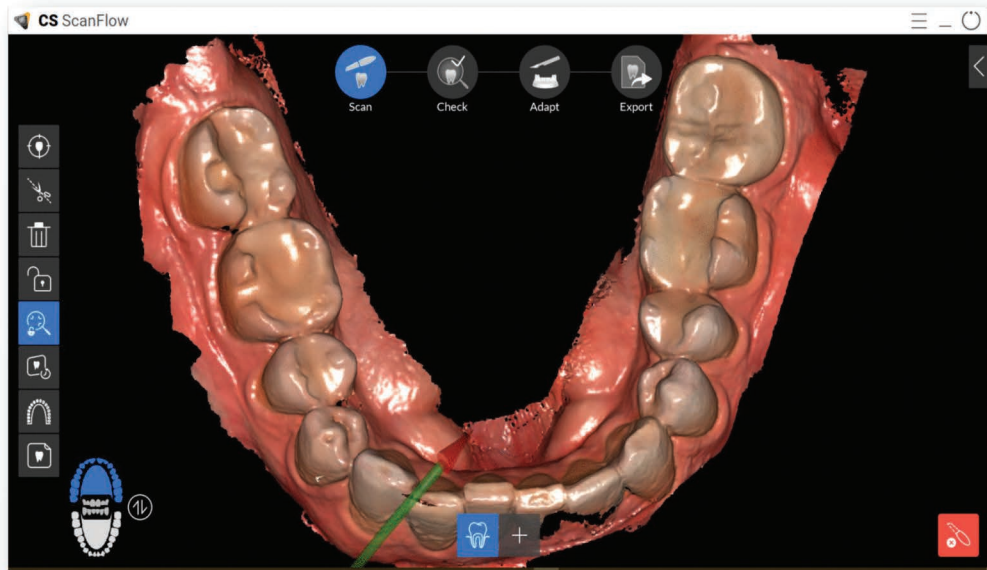


Calibrated for brilliance.

The CS 3700 comes out of the box calibrated to provide the most reliable and stable shade matching results. Then, after 50 hours of usage, the smart-calibration tool alerts the user to calibrate the scanner through a simple 12-second guided calibration on a grey card.

Workflows that let you work freely.

CS ScanFlow software completely redefines intraoral scanning workflow. Unlike other scanning acquisition software, CS ScanFlow is completely open, letting you work freely among different clinical applications with unlimited workflow capacity, expanded processing options, one-click export and touchscreen capabilities.



Unlimited workflow capacity.

The completely new workflow design lets users navigate freely among different workflows from a single scan.

Expanded processing.

Expands data processing options, processing datasets quickly and accurately.

One-click export.

Simplifies data export and exchange.

Touchscreen capabilities.

An intuitive interface delivers direct software interaction via streamlined touchscreen navigation.

Hybrid scanning.

Enhances the capture of challenging data with hybrid scanning restorative and implant-borne restorative workflows.

Chairside
Workflow

CS ScanFlow. Simplicity at work.

1 Scan:

Begin scanning the patient and choose the evolutionary workflow based on your personal preferences or your patient's clinical needs.

2 Check:

Once the scanning is complete, select from restorative, orthodontic and implant check options.

3 Adapt (optional):

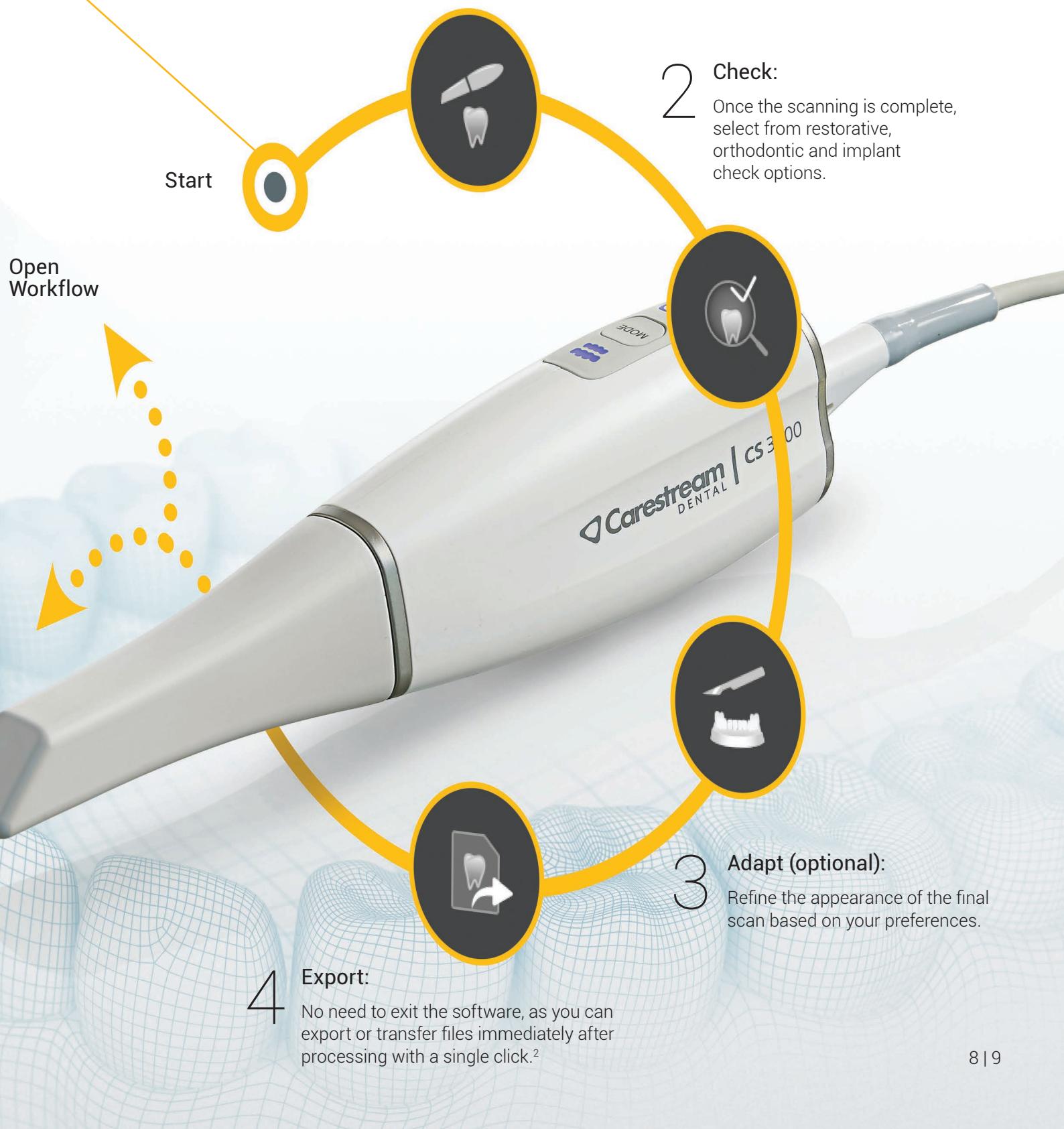
Refine the appearance of the final scan based on your preferences.

4 Export:

No need to exit the software, as you can export or transfer files immediately after processing with a single click.²

Start

Open
Workflow



Shift your scanning into turbo.

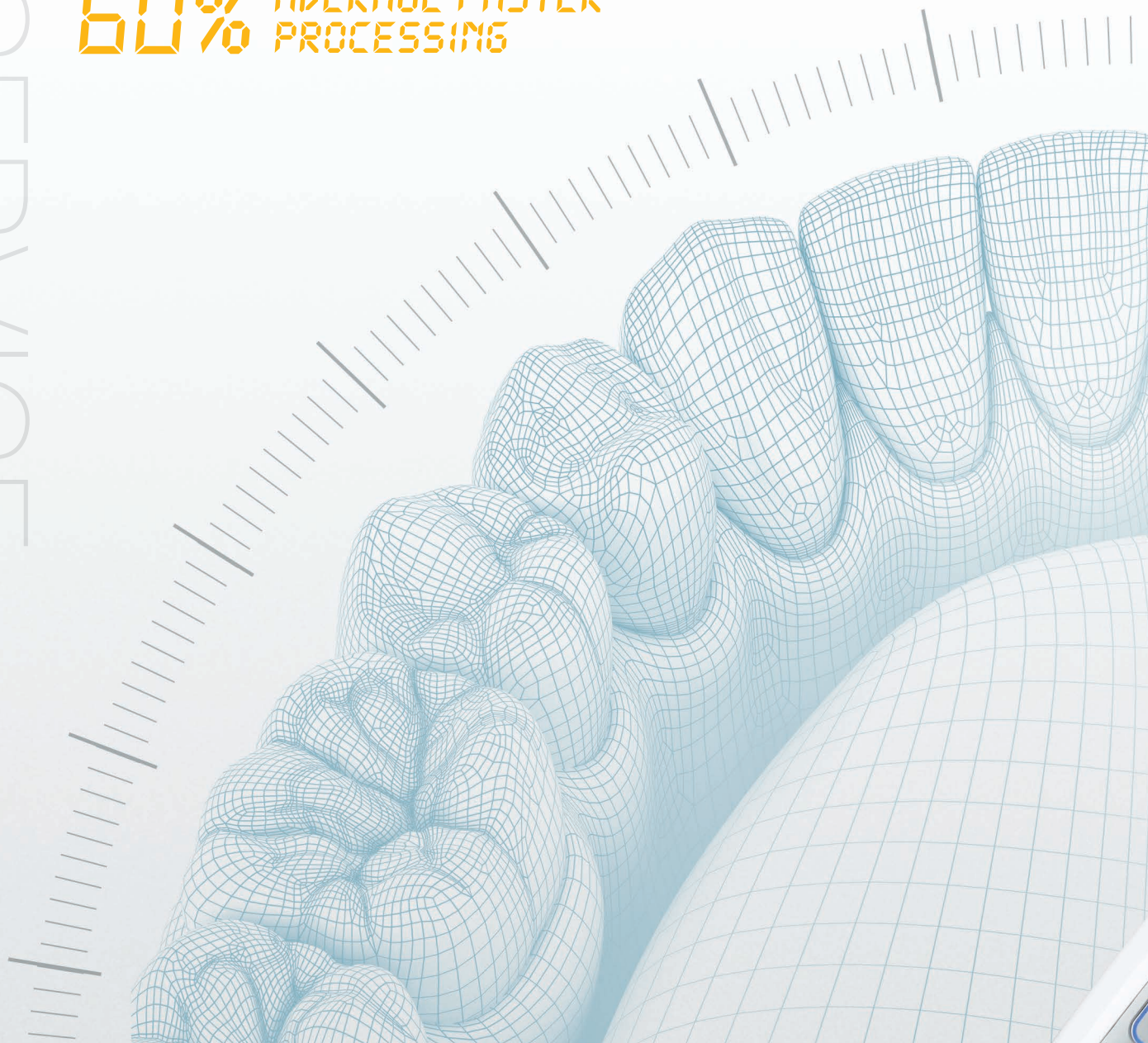
The CS 3700 doesn't just provide fast scanning. It provides turbo speed scanning. In fact, this scanner has been tested and proven to scan in vitro single arches in 30 seconds when the recommended PC configuration is used. That's 20% faster than our previous scanner, without any compromise to the accuracy of the datasets.

**20% FASTER
SCANNING**

Processing that stays up to speed.

Turbo speed scanning requires turbo speed processing. The CS ScanFlow software lets you select from multiple processing options to ensure the best option for your indication, while giving you an average of 60% time savings on refinement.³

**60% AVERAGE FASTER
PROCESSING**



Backed by forward-thinking service.



The future is yours with **CS Advantage**. This premium service program provides a full array of service, support and warranty options for your purchase. For ultimate peace of mind, enroll on day one.



CS Protect

Extends the standard warranty and increases the length of coverage to best suit your needs.



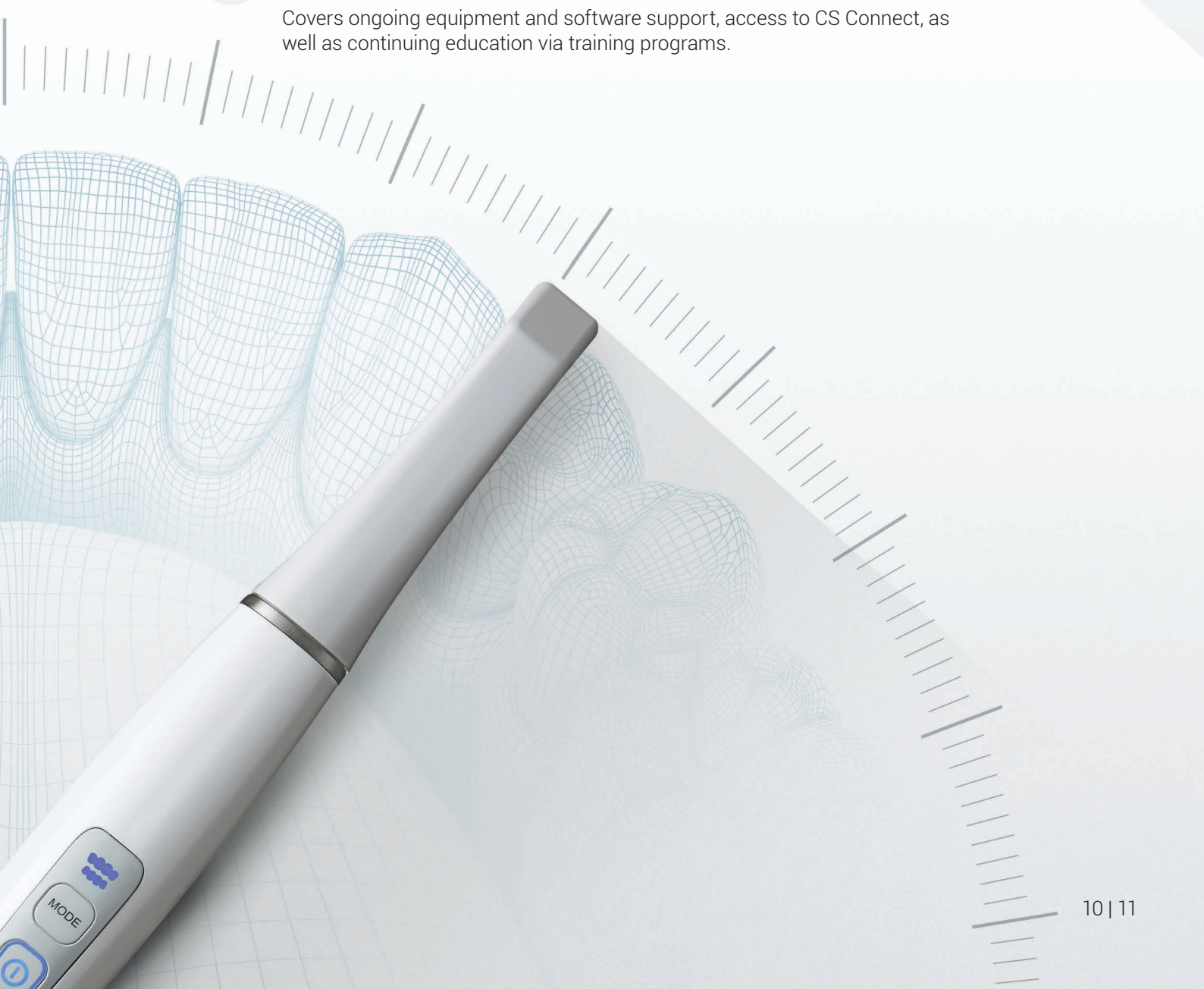
CS Update

Provides immediate access to the latest software updates.



CS Support

Covers ongoing equipment and software support, access to CS Connect, as well as continuing education via training programs.





© 2019 Carestream Dental LLC | 19094 AL 37 BR 0819
© 2019 Studio F•A•Porsche

1. When recommended PC configuration is used; in vitro test performed on a model.
2. Sending files to lab or third party via CS Connect requires enrollment in a services and support package.
3. With GPU (graphics processing unit) merging and improved texture mapping, the average time saving for refinement is approximately 60% on computers with 4 GB video memory.