

NSK

Ti-Max Z 45L



NAKANISHI INC. www.nsk-inc.com 700 Shimohinata Kanuma-shi Tochigi 322-8666, Japan TEL : +81 (0)289-64-3380 FAX : +81 (0)289-62-5636	NSK Europe GmbH www.nsk-europe.de Elly-Beinhorn-Strasse 8 65760 Eschborn, Germany TEL : +49 (0)6196 77606-0 FAX : +49 (0)6196 77606-29	NSK United Kingdom Ltd www.nsk-uk.com Office 5, Gateway1000, Arlington Business Park, Whittle Way, Stevenage, SG1 2FP, UK TEL : +44 (0)1438 310670 FAX : +44 (0)1438 310671	NSK Dental LLC www.nskdental.com 1800 Global Parkway Hoffman Estates, IL 60192, USA TEL : +1 888 675 1675 FAX : +1 800 838 9328	NSK Oceania Pty Ltd www.nskoceania.com.au Unit 22, 198-222 Young St. Waterloo, Sydney, NSW 2017, Australia TEL : +61 (0)2 8306 3000 FAX : +61 (0)2 8306 3030	NSK Middle East www.nsk-inc.com Room 6EA-701, 7th Floor, East Wing No.6 Dubai Airport Free Zone, PO Box 54316 Dubai, UAE TEL : +971 (0)4-204-5507 FAX : +971 (0)4-204-5508	NSK Asia Pte Ltd www.nsk-inc.com 1 Maritime Square, #09-33 HarbourFront Centre, Singapore 099253 TEL : +65-6376-5018 FAX : +65-6376-0233
--	--	---	---	--	---	--

Specifications are subject to change without notice.

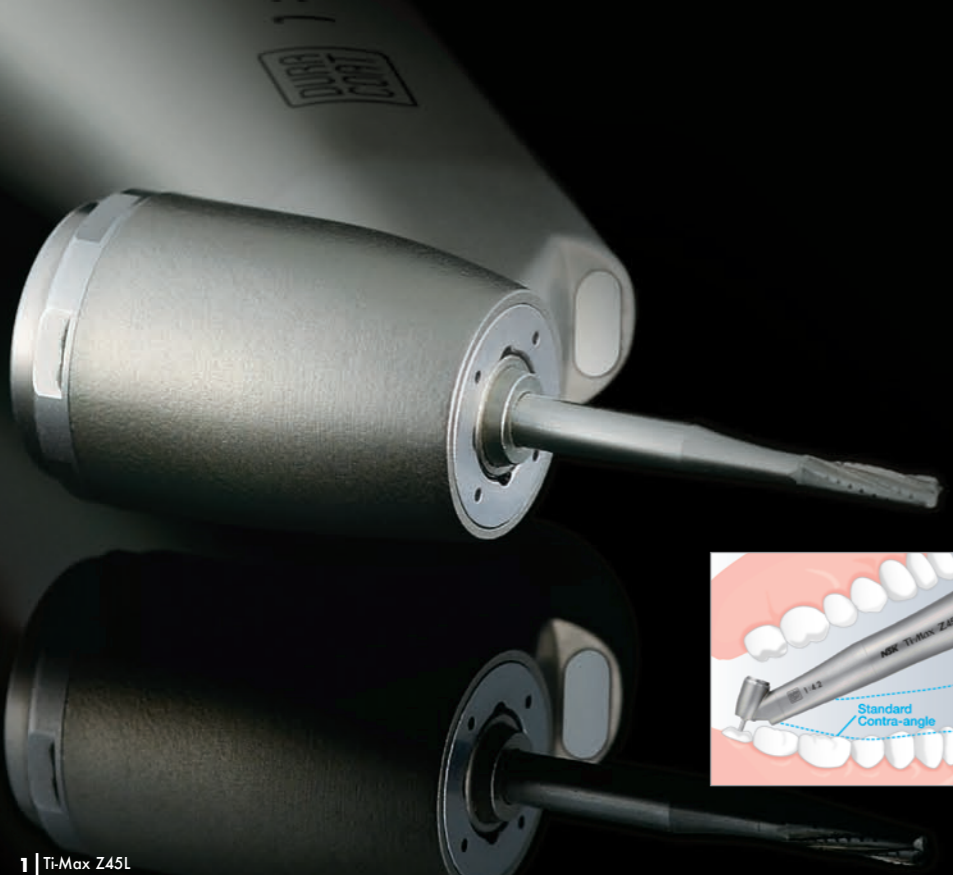
PR-D783E Ver.1 13.00.00.00

Ti-Max Z45L

45-Degree Angled Head Supplies Superior Accessibility and Maximum Visibility

The world's first 45-degree contra-angle, Ti-Max Z45L provides effortless access to hard-to-reach molars that a standard contra-angle simply can't match. The slim-form Ti-Max Z45L also offers excellent visibility and high operability, creating more space between adjacent teeth and the handpiece body. Ti-Max Z45L's powerful and consistent cutting shortens treatment time for time-consuming sectioning and third-molar extractions compared to standard contra-angles, dramatically reducing stress for both clinicians and patients.

In addition, Ti-Max Z45L boasts the world's first two-way spray function, making it suitable for a wide range of procedures such as third-molar preparation and clarifications of the root canal orifice.



Superior Accessibility

The 45-degree angled head allows easy access to the molar region, minimizing interference from the front teeth and adjacent teeth.



Water Jet Spray



Mist Spray

Two-Way Spray Function

The world's first two-way spray function allows you to instantly choose a mist or jet spray depending on the conditions and procedure with an enclosed dedicated tool. The water jet spray prevents subcutaneous emphysema in surgical procedures, and the mist spray effectively cools the bur while cutting.



Takes from Standard Bur (20mm) to Long Bur (25mm)

Ti-Max Z45L is versatile, handling a wide range of burs from 20mm standard bur to 25mm long bur depending on what the procedure requires.

Superior Accessibility Enables a Vast Variety of Clinical Applications



Sectioning a Mandibular Left Impacted Third Molar

You can gain a comfortable finger rest without stress thanks to the extra space the slim Ti-Max Z45L creates between the front teeth. It is also easy to maintain the bur at an optimal angle and achieve precise sectioning, even when the operating depth is close to apex.



Caries Removal from Maxillary Left Second Premolar on Palatal Side

When working on the palatal side of a second premolar, Ti-Max Z45L ensures that you can operate smoothly and have plenty of working space between the maxillary adjacent teeth.



Caries Removal from a Maxillary Left Lateral Incisor's Cervical Area

Securing a solid finger rest on a front tooth enables stable cutting without interference from other teeth. Since you can also freely control the angle of the bur, minimal intervention treatments are also possible.



Clarifying the Root Canal Orifice of a Mandibular Right Second Premolar

Ti-Max Z45L enables you to prep smoothly without interference from the rubber dam clamp. Its flexibility also makes treatments safer and more precise.



Ti·Max Z45L

Reliable Core Features Bring Greater Safety and Usability

- Titanium Body with Scratch-Resistant DURACOAT
- Cellular Glass Optics
- Ceramic Bearings
- Clean Head System
- Push Button Chuck
- Quattro Spray (Water Jet / Mist)
- Microfilter
- Anti Heat System



1 : 4.2 Increasing

MODEL: **Z45L** ORDER CODE: **C1064**

- For FG burs (ø1.6)
- Max Speed: 168,000 min⁻¹



Water Jet

Mist

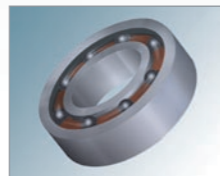


Clean Head System

The patented NSK Clean Head System is a special mechanism designed to automatically prevent the entry of oral fluids and other contaminants into the handpiece head prolonging the life of the bearings.

Ceramic Bearings

Ceramic Bearings are 25% harder than conventional steel bearings but are only half the weight. Because frictional wear between the ball bearings and the bearing retainer is significantly reduced the efficiency and durability is significantly increased.



NSK DURACOAT

DURACOAT, NSK's latest surface enhancement technology, takes advantage of the non allergic and biocompatible properties of titanium to further improve durability. DURACOAT creates a smooth, scratch resistant surface which is comfortable to hold.

Solid Titanium Body

Titanium is 30% lighter than stainless steel, more durable and corrosion resistant. The reduced weight and well balanced shape give a natural tactile sense.



Anti Heat System

NSK's unique head cap design helps to limit heat generation and to disperse heat generation during treatment. NSK is always putting patient's safety first.

Microfilter

Microfilter to prevent particles from entering the water spray system to guarantee optimum water spray cooling at all times.

